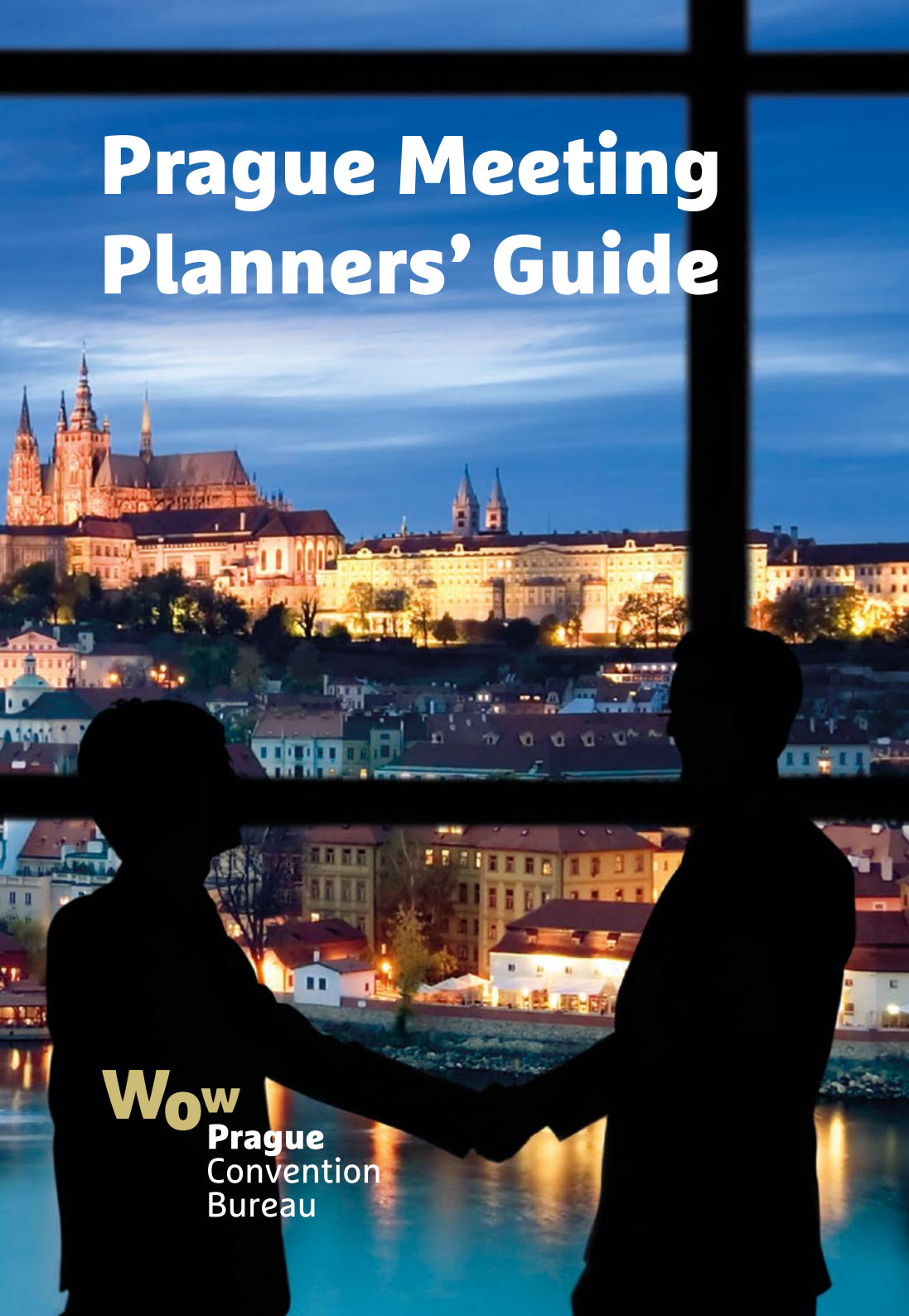


# Prague Meeting Planners' Guide

A nighttime photograph of the Prague skyline, featuring the illuminated Prague Castle and St. Vitus Cathedral. In the foreground, the silhouettes of two men in business suits are shaking hands, with their arms extended towards each other. The city lights and the Vltava River are visible in the background.

**Wow**  
Prague  
Convention  
Bureau



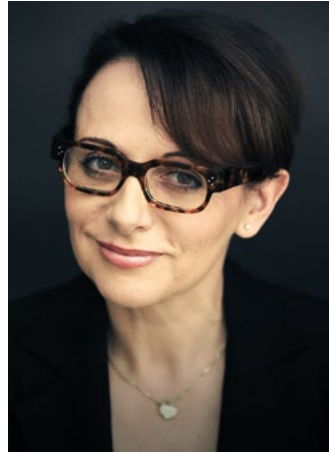
# Wow

## Prague InSpires





## Dear Friends,



It gives me great pleasure to introduce you to Prague – an enchanting city on whose streets you'll discover a unique history combined with a progressive present. Together, they create an intriguing whole experienced by millions of visitors from around the world every year. Prague extends its heartfelt welcome to all.

Dozens of congresses, symposia, professional conferences, and summits take place in the Czech capital every year. Prague offers plenty of event space, accommodation, and transportation capacity to handle a wide variety of events, including world-class gatherings. Prague's event organisers are true professionals with extensive experience, ready to do anything and everything to ensure that events are successful.

Prague provides conference and congress participants not only first class service during the event itself, but also plenty of wonderful leisure options. Prague's rich cultural scene and nightlife offer something for everyone.

In short – if you're looking for somewhere to hold your symposium, summit, or conference, you'll be hard-pressed to find a better place than Prague. Come and see for yourself – we look forward to seeing you!

**Adriana Krnáčová**

*Mayor of Prague*



## Dear Guests,



We are very proud that Prague is known as a popular destination for tourists from all continents; furthermore, it is fast becoming a sought-after location for conferences and congresses. Prague is a cultural, social, and economic centre, and the home to one of the oldest universities in the world. Its strategic position in the very heart of Europe and steadily improving support services are both very good reasons why thousands of professional meetings take place here every year.

According to the International Congress and Convention Association (ICCA), Prague ranks eleventh on the global chart of the most popular congress destinations, a significant increase from 2010, when it placed nineteenth. Prague's growing importance in the field of congress tourism is also attested by the fact that in 2017, it will host the 56th Congress of ICCA itself.

I sincerely believe that this prestigious event will draw even more delegates to our capital city where, despite their busy programme, they'll be able to see for themselves how lovely – and lively – Prague is.

It is my greatest wish that all of us who have the power to spread Prague's renown exert every possible effort to ensure that people return to us. I also believe that if you choose Prague for your event, you'll be more than satisfied and that the next time you travel to Prague, you'll bring your friends or family along.

**Nora Dolanská**

*Director, Prague City Tourism*





## Dear friends and partners,



Prague, the capital of Czech Republic, is thanks to its unique and unforgettable atmosphere considered one of the most beautiful cities in the world. There are many factors why Prague belongs to the most popular cities not only amongst tourists but also the business travellers.

It is a city very easy to access and move around thanks to its location and efficient public transportation system ranked the fourth best in Europe. The Václav Havel Airport Prague is only 25 minutes away from the city centre, where numerous UNESCO sights lay within the reach of a visitor's hand.

The city regularly plays host to a multitude of prestigious exhibitions, events, and more international festivals. The symbiosis of the old and the new is what makes Prague an attractive place both for the history admirers and for the organizers of congresses and incentive events. There is a wide range of venues on offer: from ancient palaces with an unforgettable atmosphere to modern buildings equipped with up-to-date technologies. The capacity of hotels, especially those belonging to 5 and 4 stars category, is increasing as well as the quality of services which can meet requirements of the most demanding clients.

Prague's professional conference organizers and destination management companies provide first-class and complex services from corporate meetings for 15 people, to full-scale events with up to 10,000 participants, all on time and to budget.

**Roman Muška**

*Managing Director of the Prague Convention Bureau*





## Prague City Tourism

Promoting the city as a tourist destination to both domestic and international audiences, Prague City Tourism provides current and future visitors with the latest information on Prague's attractions, experiences and services through its web site and information centres. It also books tickets, guides, tours, and other experiences.

As Prague's official tourism marketing organization, it works with the media and travel trade partners both in the Czech Republic and abroad in organizing educational trips, workshops, and presentations. Prague City Tourism also attends important tourism-related events to spread the reputation of Prague as a world-class destination. Last but not least, it actively promotes congress tourism and collaborates with the film industry in making Prague a location of choice for international productions.

Prague City Tourism is an active member of the following national and international organizations and associations: PCB - Prague Convention Bureau, A.T.I.C. - Association of Tourist Information Centres, ECM - European Cities Marketing, and CEE - Central European Experience.

[www.praguecitytourism.cz](http://www.praguecitytourism.cz)

[www.prague.eu](http://www.prague.eu)







# Prague Convention Bureau

The Prague Convention Bureau is the official convention bureau of the city of Prague. We are a non-profit organization working alongside other Czech tourism authorities in offering a one-stop-shop service for organising a conference, meeting, seminar, exhibition or incentive event in Prague.

Our mission is to strengthen positive awareness of the city of Prague as one of Europe's leading conference destination. Our assistance is free of charge to any national or international organiser of meetings, conventions and incentives. Our knowledgeable team and leading industry members are glad to offer you prompt advice and support in acquiring the components that will make your event in Prague a memorable and successful one.

The Prague Convention Bureau was re-established in 2008 as a private entity for the purpose of promoting Prague internationally as a meetings and convention destination. In order to hold its corner in today's networked global markets, the Prague Convention Bureau belongs to many international convention and meeting industry associations. Its role is that of a network-based partnership cooperating directly with hotels, conference venues, professional congress organisers and other industry suppliers.

[www.pragueconvention.cz](http://www.pragueconvention.cz)

**Wow**  
Prague  
Convention  
Bureau



# Contents

Why Prague	●
General Information	●
Conference Facilities and Venues	●
Conference Hotels (meeting facilities for over 250 pax)	●
Hotels (meeting facilities for up to 250 pax)	●
Catering and Restaurants	●
Meeting Organisers	●
Others	●
Unique Venues	●
Social Program	●



**“The people of Prague  
understand me.”**

Wolfgang Amadeus Mozart

**“Prague never lets you go...  
this dear little mother has  
sharp claws.”**

Franz Kafka





## Why Prague

**The capital Prague** is the most attractive tourist and meeting destination in the Czech Republic. The City of a Hundred Spires on the Vltava River is known to people from all over the world and ranks among the most beautiful cities in Europe. Those who want to get to know the Czech Republic more thoroughly, however, set out on a journey through the other beauties of the country, where an expedition into history, a ramble through nature, a challenge on the golf course, or relaxation in a spa awaits. Quite simply, experiences that won't be forgotten...



## Inspiring

Let Prague inspire you, just as it inspired many significant artists and scientists in the past. The city's mysterious atmosphere reflects in the works of Prague's native son Franz Kafka. W.A. Mozart, whom "the people of Prague understood," completed and first performed his best-known opera Don Giovanni here. Prague also became an important university centre which gave the world a number of personalities without whose discoveries and inventions we could hardly imagine our lives today. There is never an "off-season" in Prague. It is inherently linked with excellent operas, concerts, theatre and ballet performances. Every year Prague hosts the Prague Spring festival - a renowned gathering of the world's best classical musicians, a number of international film festivals, the Prague International Jazz Festival, and many others.



## Connecting

Prague has always been a crossroad of the most important trading routes, as well as a cultural and political centre of Europe. One of its major landmarks, Charles Bridge, symbolizes the historical connection between the east & west that made Prague a place where elements of Slavic, German, Italian, and Jewish cultures merged to create a picturesque city with a unique, magical atmosphere. One of the safest destinations with a great infrastructure offers a variety of different venues. The city has a long tradition in hosting significant international meetings, such as the Annual Meeting of the International Monetary Fund (IMF) in 2000, the Prague NATO Summit in 2002, and the largest congress in its history - ERA-EDTA in 2011, which was attended by over 10,000 delegates. Prague is the place where people meet.



## Accessible

Prague's location in the heart of Europe makes the city easily accessible to travelers from almost every country. Fifty-eight airlines fly to 121 destinations in 43 countries from the Václav Havel Airport Prague, one of the busiest airports in Central Europe. Every year, 11 million passengers pass through its gates. Prague has three international railway stations and a bus station, all connected to the metro. An extensive motorway network links Prague to other major European destinations. Thanks to the city's public transportation system, ranked the fourth best in Europe, everything can be reached within a few minutes. Moreover, Prague is a green and very walkable city, offering a wide range of attractions within a small area. Museums, restaurants, historical monuments, relaxation and entertainment - all are virtually within arm's reach.





## Traditionally Modern

Prague is not only rich in architectural monuments, cultural heritage and historical sights, but is also modern and dynamic. The city offers many options: you can hold a meeting in one of the monumental historical palaces or in a comfortable contemporary venue. You can have a pint in a traditional Czech brewery or enjoy fine dining in a Michelin-starred restaurant. You can take a historical tram ride or use the efficient public transportation system. All this together makes Prague an extraordinary, attractive place ideal for all types of meetings and incentive programs.



## Value For Money

Prague offers world-class services at a reasonable cost. Prague is famous for its hospitality and excellent infrastructure. Local hotels can accommodate over 90,000 people in more than 42,000 rooms. The Prague Congress Centre, which can host meetings for more than 9,000 delegates, boasts of one of the best urban views in the world. Prague's DMCs and PCOs provide high standard and comprehensive services. This is why Prague is an ideal destination for international meetings.



# General Information







# General Information

## Facts and Figures

**Population:** 1,250,000

**Geographical location:** 50°05'19" N and 14°25'17" E (city centre)

**Height above sea level:** 235 metres (average)

**Area:** 496 square kilometres

**River:** The Vltava flows through Prague for 31 kilometres.

**Climate:** The average annual temperature is 9 °C  
(January: -2 °C / 28.4 °F, July: 20 °C / 68 °F)

**Official currency:** Czech crown (CZK)

**Electricity supply:** 230 V

**Time:** CET (GMT + 1), summer time - CET + 1 (GMT + 2)

## Visa Policy

The Czech Republic has been a member of the European Union since 2004. EU citizens require passports or other forms of valid identification in order to enter the country. The same applies for the citizens of Iceland, Lichtenstein, Norway and Switzerland, who can move freely within the European Union.

Visitors from other countries must have passports valid for at least a further six months after the date of arrival and in some cases visa. The list of countries whose citizens require a visa in order to visit the Czech Republic can be found on the website of the Czech Ministry of Foreign Affairs ([www.mzv.cz](http://www.mzv.cz)).

In 2007, the Czech Republic signed the Schengen agreement. Citizens of the Schengen countries can move freely within the Schengen area without having to go through border checkpoints. However, they must still have their passports or identification cards with them when travelling.

## Public Holidays

**January 1st** - New Year's Day, Day of the Renewal of the Independent Czech State following the break-up of Czechoslovakia (1993)

**March/April** - Good Friday, Easter Monday

**May 1st** - International Labour Day

**May 8th** - Victory Day - liberation of Czechoslovakia by the Allied Armies in 1945.

**July 5th** - Feast of St. Cyril and St. Methodius - marks the arrival of the two Slavic missionaries who brought with them Christianity and the first Slavonic alphabet - Cyrillic (863 AD).

**July 6th** - the day in 1415 when religious reformer and rector of Charles University Jan Hus was burned at the stake for heresy.

**September 28th** - Czech Statehood Day - anniversary of the murder of St. Wenceslas, Prince of Bohemia, by his brother.

**October 28th** - Founding of the Independent Czechoslovak State in 1918. The most important state holiday in the country.

**November 17th** - Day of Struggle for Freedom and Democracy - commemorates the university students who protested against the Nazi occupation in 1939 and against the communist regime in 1989.

**December 24th** - Christmas Eve

**December 25th** - Christmas Day

**December 26th** - Boxing Day

## Important Numbers

Emergency telephone numbers are composed of three digits and can be dialled from mobile telephones and phone boxes free of charge:

**112** - general emergency number

**150** - fire brigade

**155** - ambulance / first aid

**156** - Prague municipal police

**158** - police

When phoning to the Czech Republic, you must first dial +420 (or 00 420) and then the nine-digit number.

## Useful Websites

[www.pragueconvention.cz](http://www.pragueconvention.cz)

[www.czechtourism.com](http://www.czechtourism.com)

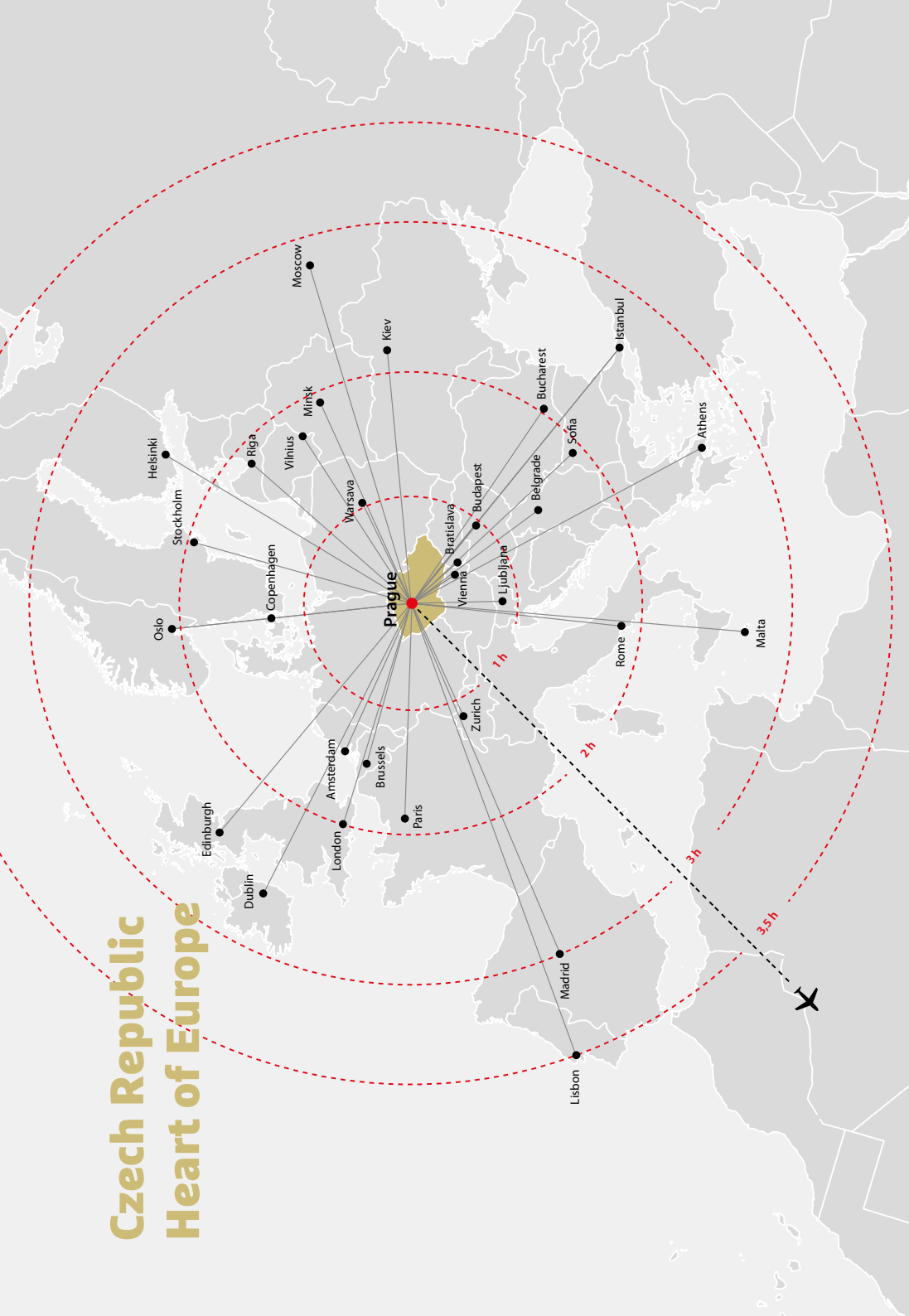
[www.prague.eu](http://www.prague.eu)

[www.mmr.cz](http://www.mmr.cz)

[www.praha.eu](http://www.praha.eu)

[www.mzv.cz](http://www.mzv.cz)

# Czech Republic Heart of Europe





<b>Flights durations FROM / TO:</b>		
Amsterdam	716 km	1h30
Brussels	709 km	1h25
Copenhagen	628 km	1h20
Beijing	7,428 km	9h30
Stockholm	1,061 km	1h55
Frankfurt	419 km	1h05
Helsinki	1,305 km	2h05
Madrid	1,759 km	2h50
Lisbon	2,238 km	3h35
London	1,024 km	1h55
New York	6,567 km	8h50
Oslo	1,117 km	1h50
Paris	864 km	1h45
Zurich	519 km	1h10
Dubai	4,447 km	5h50
Seoul	8,269 km	10h

<b>TOP 5 destinations connected to Prague in terms of number of passengers in 2015:</b>	
1.	Paris/Charles de Gaulle
2.	Moscow/Sheremetyevo
3.	Frankfurt
4.	Amsterdam
5.	London/Heathrow



[www.prg.aero/b2b](http://www.prg.aero/b2b)

← B3 B4 →



# PRAGUE HAS

# BECOME A MATTER OF THE HEART FOR ME

In Prague they always do something extra so that I fall in love with it. Thanks to generous offers and a friendly approach I have twice as many reasons to return here. Not only have they extended the five existing incentive programmes, but they have also prepared three brand new ones. **They will look after you, too.**



WINNER 2015 IN CATEGORY  
4-20 MILLION PASSENGERS

[#prglovesyou](https://www.prg.aero/b2b)





## Premium services at Prague Airport not only for exclusive travellers

### VIP Service Club CONTINENTAL

- Complimentary Škoda Limousine Service with chauffeur for up to 30 km
- Immediate and wait-free check-in of both passengers and luggage
- Privacy and comfort in a luxurious lounge
- All-inclusive refreshments, including service
- Individual security checks
- Limousine transportation directly to the aircraft
- Children's corner, Wi-Fi

### Airport Lounges

- MasterCard Lounge, Terminal 1
- ERSTE Premier Lounge and Raiffeisenbank Lounge, Terminal 2
- Privacy and comfort in pleasant environment
- Self-service bar with all-inclusive refreshments
- Wi-Fi, daily newspapers, TV, Children's corner
- Individual security checks (Raiffeisenbank Lounge only)
- Premium services at Prague Airport  
not only for exclusive travellers

### Rest & Fun Center

- Internet café
- Refreshments
- Private mini lounge
- Hotel rooms
- Showers

# Basic facts about Czech Airlines

Czech Airlines is the Czech Republic's flag carrier, modern airline with friendly and flexible services founded on strong responsibility for safety, security and quality arising from its long-lasting tradition. Czech Airlines is one of four oldest airlines in the world founded in October 1923. With a fleet of 17 planes it provides connections from and via Prague to important destinations in Europe and Asia. Working with its partners, the carrier will offer connections to more than 120 destinations in 50 countries worldwide during the 2015 summer season.

Czech Airlines announced to launch up operations to 19 new destinations and 25 regular scheduled connections in 2015 summer season. The most of new routes, altogether 20, are from Prague, the company main hub, to western, northern and southern Europe, one from Ostrava (to Dusseldorf) and four from Stuttgart. Czech Airlines will operate 48 destinations in 24 countries throughout the 2015 summer season.

From July 2012, Czech Airlines has been a part of the Czech Aeroholding Group, the company's majority shareholder. Korean Air, one of the largest and most important world air carriers, assumed the role of a new strategic partner and shareholder of Czech Airlines in 2013.

Czech Airlines has been a member of the SkyTeam Alliance from 2001.

Czech Airlines is ISO 14001 (Environmental Management) and IOSA (IATA Operational Safety Audit) certified. These certifications represent the most advanced safety standards in the air transport industry.





## Transport Facts

Situated in the heart of Europe, Prague represents a major transport junction and an ideal strategic location for international meetings.

### Prague Airport

- Modern, efficient and passenger-friendly
- Highest standard and cutting-edge technologies
- Holder of the prestigious IATA Eagle Award for the Most Deserving Airport 2011
- Voted the Best Airport in Eastern Europe in 2005, 2007 and 2009
- Quick and frequent city bus connections
- Maximum of 30 minutes' drive from/ to the city centre
- 11 million passengers a year
- 58 airlines fly from Prague to 121 destinations in 43 countries
- More info at **[www.prg.aero](http://www.prg.aero)**

The biggest Czech airline company is Czech Airlines, the Czech national carrier ([www.csa.cz](http://www.csa.cz)). It flies to most capital cities in Europe.

### Airport Transfer

Bus stops to Metro lines A and B:

- Terminal 1 - in front of the Arrival Hall
- Terminal 2 - in front of the Arrival Hall
- Airport Express: Prague Airport - Prague Central Station (Metro line C and connection to SC, EC, IC and EN trains) - 35 min.



## By Train

- 4 rail terminals - Prague Central Station (Praha hlavní nádraží), Holešovice, Prague - Smíchov, and Masarykovo nádraží, all connected with Metro lines B and C
- Rail connections with cities throughout Europe

## By Car

- Prague is a major crossroads for European East-West and North-South road traffic
- Highways and motorways link Prague with all the surrounding countries
- By motorway it now takes only two hours to reach the German borders

## Public Transport

- Advanced integrated public transport system
- Swift and efficient metro, tram and bus connections
- High frequency timetables
- Online timetables and journey planner
- Metro is in operation from 5 a.m. until midnight
- Special night tram and bus services

## Fares

- Basic fare - 32 CZK (€ 1.20) - ticket can be used for up to 90 minutes on all means of public transport
- Ticket valid for only 30 minutes - 24 CZK (€ 0.90) on all means of public transport
- Ticket valid for 1 day - 110 CZK (€4.10)
- Ticket valid 3 days - 310 CZK (€ 11.50)
- Airport Express fare - 60 CZK (€ 2.25) for one-hour use of this line only

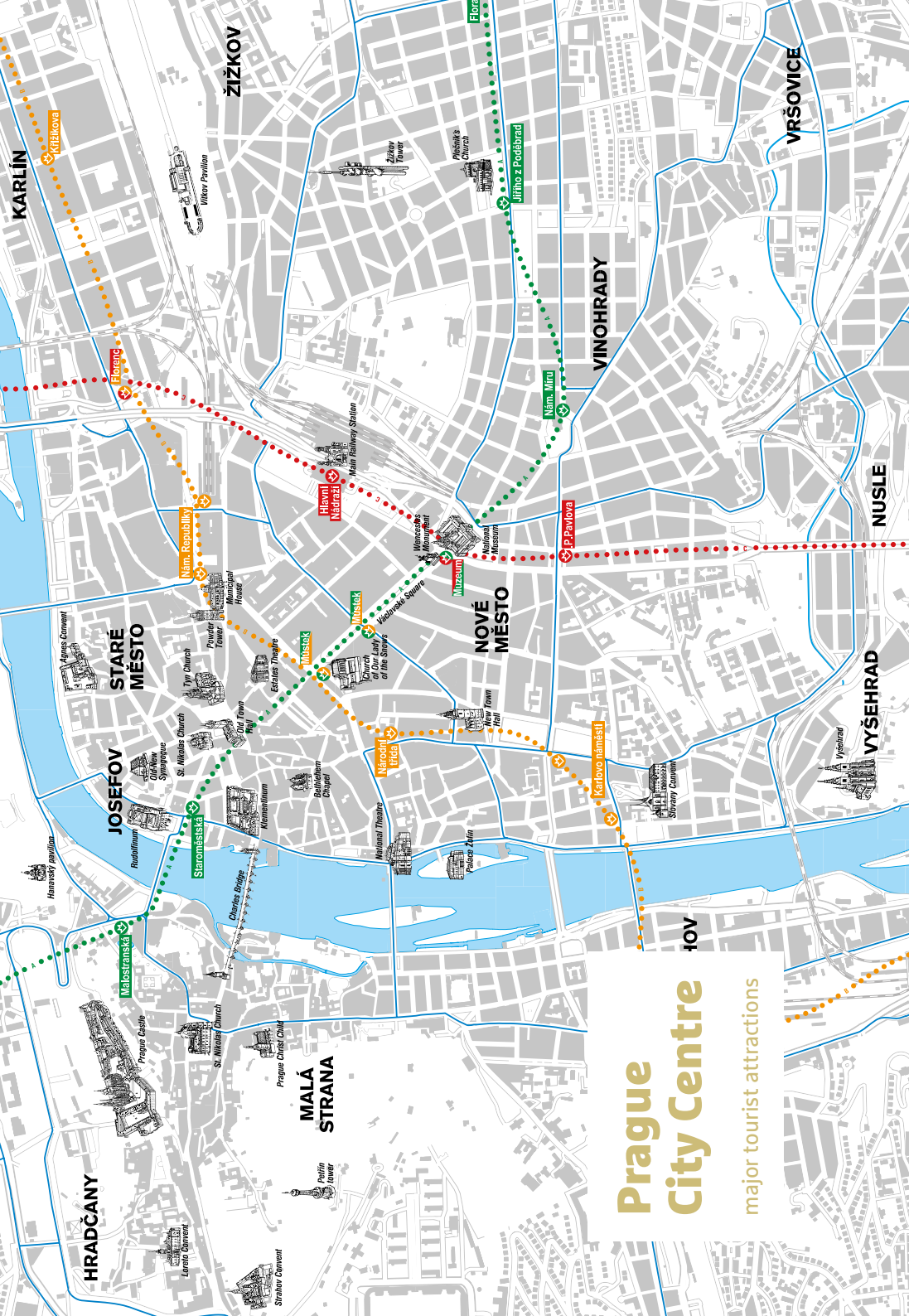
## Public Transport Tickets can be purchased:

- At public transport counters or Prague City Tourism information centres in the arrival halls of Terminals 1 & 2 at the Airport (from 7 a.m. to 10 p.m.)
- From automatic ticket machines placed at bus stops and tram stops and at metro stations (cash required)
- From bus drivers (cash required)
- At newsstands

## Taxi Service

- Efficient 24-hour taxi services
- Avoid problems by using official taxi services only
- Boarding fee (flag fall) - 40 CZK (€ 1.50)
- 1 km - 28 CZK (€ 1.05)
- 1 minute wait - 6 CZK / 1 min (€ 0.25)

*Note: Prices in euros depend on current exchange rate.*



# Prague City Centre

major tourist attractions

HRADČANY

St. Nicholas Church  
Prague Castle  
Lennon Wall  
Starý konvent

MALÁ  
STRANA

Starý konvent  
Petrin Tower

JOSEFOV

Staroměstská  
Rozhlídky  
Old-New Synagogue  
St. Nicholas Church  
Klementinum

STARÉ  
MĚSTO

Agnes Convent  
Powder Tower  
Municipal House  
St. Martin Church  
Estate Theatre  
Old Town Hall  
Wenceslas Square  
Wenceslas Bridge  
Wenceslas Square  
National Theatre  
Palace Altn

NOVÉ  
MĚSTO

Národní  
tržnice  
New Town Hall  
National Museum

VINOHRADY

Jiřího z Poděbrad  
Nam. Míru

ŽIŽKOV

Viktor Pavillon  
Žižkov Tower  
Petřín's Church

VRŠOVICE

NUSLE

VYŠEHŘAD

Vyšehrad  
Silver Convent

KARLÍN

Křižkova

Bloking

Nám. Republiky

Hlavní Náměstí

Můstěck

Národní Tržnice

P. P. Pavlova

Karlovo náměstí

Staroměstská

Malostranská

Nám. Míru

Jiřího z Poděbrad

Florenc

# Conference Facilities and Venues



# Conference Facilities and Venues



Prague Congress Centre	2764
Žofín Palace	800
National House of Vinohrady	666
Lobkowitz Palace - Prague Castle	280
Prague Airport Congress Hall	260
Musée Grévin Prague	



Theatre



School



Banquet



Reception



# Prague Congress Centre



Conference Facilities and Venues

With capacity for up to 9,300 delegates and visitors, the Prague Congress Centre (PCC) is among the largest multifunctional event venues in Central Europe. The PCC has 20 halls and 50 meeting rooms with the seating capacities from 12 up to 2,764 and spacious exhibition areas covering up to 13,000 m<sup>2</sup>. The PCC's highly experienced production team provides best-of-class AV equipment and services for practically any type of event, from international summits, to product launches and cultural performances. Located on the edge of Prague's historic centre, the PCC boasts magnificent views over the Old Town and Prague Castle.

	m <sup>2</sup>				
Maximum capacity of the largest room	4214	2764	–	–	–

Total meeting rooms:	Total exhibition space:	Total meeting space:
70	13000 m <sup>2</sup>	32000 m <sup>2</sup>

5. května 65  
140 21 Praha 4  
**Phone:** +420 261 172 222

**E-mail:** [booking@kcp.cz](mailto:booking@kcp.cz)  
[www.kcp.cz](http://www.kcp.cz)



## The largest multifunctional event venue in the Czech Republic

- 70 halls and meeting rooms with capacities ranging from 12 to 2,764 persons
- Spacious foyer areas for exhibitions, receptions, gala dinners etc.
- Each year the PCC hosts almost 400 diverse events, big and small
- Hosts international and national congresses, corporate events, receptions, cultural performances etc.
- Exclusive views of historical Prague and Vyšehrad from foyers and neighbouring halls
- Own hotel Holiday Inn Prague Congress Centre just a few steps from Prague Congress Centre



  
PRAGUE CONGRESS  
CENTRE

Prague Congress Centre ■ +420 261 172 222 ■ [booking@kcp.cz](mailto:booking@kcp.cz) ■ [www.kcp.cz](http://www.kcp.cz)





# Žofín Palace



Conference Facilities and Venues

Žofín Palace – a unique Prague venue in the historical centre of the city. Žofín Palace has been a leading centre of cultural and social life in Prague since 1837. Four halls in a Neo-renaissance building with a restaurant and a romantic garden located on Slavonic Island on the Vltava river. The maximum gala dinner set-up in the Large Hall is for 840 persons. Your best choice for company events, gala-dinners, balls, fashion shows, congresses and presentations. We can offer Prague’s loveliest halls, as well as top level services and a team that is dedicated to ensure clients’ complete satisfaction.

	m <sup>2</sup>				
Maximum capacity of the largest room	570	800	300	500	1000

Total meeting rooms:	Total exhibition space:	Total meeting space:
6	800	1396 m <sup>2</sup>

Slovanský ostrov 226  
110 00 Praha 1  
**Phone:** +420 224 932 519

**E-mail:** [obchod@zofin.cz](mailto:obchod@zofin.cz)  
[www.zofin.cz](http://www.zofin.cz)



# ŽOFÍN PALACE



## YOUR BEST CHOICE FOR

Company events • Gala-dinners  
Balls • Fashion shows • Congresses  
Presentations • Film and TV location

Agentura  
NKL 

Palác Žofín, Slovanský ostrov 226, Praha 1  
tel.: +420 224 930 880, +420 224 932 519  
e-mail: [obchod@zofin.cz](mailto:obchod@zofin.cz)  
[www.zofin.cz](http://www.zofin.cz)

# National House of Vinohrady



Conference Facilities and Venues

The Neo-renaissance building of the National House of Vinohrady first opened in 1894. Its convenient location is one of its great advantages: It is right in the city centre, making it an ideal place for social and cultural events. The National House of Vinohrady offers three outstanding and luxurious halls and five superb meeting rooms. Other benefits are handy parking, technical support including lifts, high speed internet, WiFi, etc. The building is ideal not only for cultural events, but also for conferences, sales and contract exhibitions and training seminars.

	m <sup>2</sup>				
Maximum capacity of the largest room	454	666	288	400	800

Total meeting rooms:	Total exhibition space:	Total meeting space:
8	–	1356 m <sup>2</sup>

Náměstí Míru 9  
120 53 Praha 2  
**Phone:** +420 221 596 111

**E-mail:** [obchod@nardum.cz](mailto:obchod@nardum.cz)  
[www.nardum.cz](http://www.nardum.cz)

# Lobkowicz Palace - Prague Castle



Conference Facilities and Venues



Hold your next event at the historic Lobkowicz Palace where our reception and meeting rooms offer a memorable experience in a rich and distinctive setting. Located in the only privately-owned building in the Prague Castle complex, Lobkowicz Palace combines luxurious spaces, museum collections of worldwide significance and stunning views overlooking the “City of 100 Spires”, making it a unique choice for receptions, business meetings and private events. The dedicated, experienced and multilingual staff at Lobkowicz Events Management will be pleased to create a memorable event for you and your guests.

	m <sup>2</sup>				
Maximum capacity of the largest room	245	280	–	180	220

Total meeting rooms:	Total exhibition space:	Total meeting space:
11	–	784 m <sup>2</sup>

Jiřská 3  
119 00 Praha 1  
**Phone:** +420 734 579 337

**E-mail:** [chvatalova@lobkowicz.cz](mailto:chvatalova@lobkowicz.cz)  
<http://lobkowicz-palace.com>

# Prague Airport Congress Hall



There are modern congress halls with a capacity of up to 350 seats available at the airport, suitable for staging conferences, social activities, training or business meetings.

Largest room theatre setup	Total meeting rooms:	Total exhibition space:	Total meeting space:
260	1	–	600 m <sup>2</sup>

K Letišti

160 08 Praha 6

**Phone:** +420 220 116 381

**E-mail:** [Lucie.baldrianova@prg.aero](mailto:Lucie.baldrianova@prg.aero)

[www.prg.aero](http://www.prg.aero)

# Musée Grévin Prague



Musée Grévin is a unique themed venue in the historical city center of Prague. Meet Czech and international celebrities in one magic place. Flexible space for up to 400 guests can be used for an icebreaker cocktail party, seated awards dinner or celebration of any kind. Events at Grévin are entertaining, glamorous and truly unforgettable.

Celetná 15

110 00 Praha 1

**Phone:** +420 226 776 776

**E-mail:** [info.praha@grevin.com](mailto:info.praha@grevin.com)

[www.grevin-praha.com](http://www.grevin-praha.com)



# Conference Hotels





# Conference Hotels

(meeting facilities for over 250 pax)

	
Clarion Congress Hotel Prague	1600
Hilton Prague	1350
Prague Marriott Hotel	650
Aquapalace Resort Prague	648
InterContinental Prague	580
GrandioR Hotel Prague	515
Corinthia Hotel Prague	500
Hotel Olšanka	460
Vienna House Diplomat Prague	450
andel's by Vienna House Prague	365
Hilton Prague Old Town	340
Grand Majestic Plaza	289
Barceló Praha	280



Theatre



School



Banquet



Reception



# Hilton Prague



Conference Hotels

The Hilton Prague is located within walking distance of the city centre. It boasts 791 guest rooms including Executive rooms. Meeting facilities of almost 5,000 m<sup>2</sup> include a Congress Hall for up to 1,500 guests and versatile meeting rooms. The sophisticated Grand Ballroom for up to 650 guests is an ideal venue to host social functions. All meeting rooms feature hi-tech AV equipment and high-speed internet access. Hilton Prague was awarded the Best Business Hotel in Eastern Europe for five consecutive years by the Business Traveller Awards (latest in 2014.)

	m <sup>2</sup>				
Maximum capacity of the largest room	1179	1350	700	740	1500

Total meeting rooms:	No. of bedrooms:	Total meeting space:
37	791	4219 m <sup>2</sup>

Pobřežní 1  
186 00 Praha 8  
**Phone:** +420 224 842 933

**E-mail:** [cb.prague@hilton.com](mailto:cb.prague@hilton.com)  
<http://prague.hilton.com>



## PREPARE TO MEET SUCCESS.

Hold your meetings and conferences at one of our Hilton hotels in Prague, offering a large choice of business and leisure facilities, including Executive Floors and Lounges.

The award winning Hilton Prague features 791 modern guest rooms, 37 versatile meeting rooms, Congress Hall and Grand Ballroom.

Located in the city centre, Hilton Prague Old Town offers 303 refurbished guest rooms, 14 meeting rooms and Dvorak Ballroom.

**For more information visit [prague.hilton.com](http://prague.hilton.com)  
or [prague-oldtown.hilton.com](http://prague-oldtown.hilton.com).**

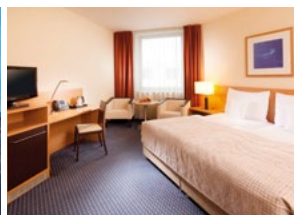


Pobrezni 1 | Prague 8  
186 00 | Czech Republic



V Celnici 7 | Prague 1  
110 00 | Czech Republic

# Clarion Congress Hotel Prague



Conference Hotels

Clarion Congress Hotel Prague is predominantly a congress centre striving to provide the utmost comfort to their guests and ensure conference services of the highest standard. 4,000 m<sup>2</sup> of congress space is divided into 27 lounges and halls with the seating capacity of up to 2,500 participants places the hotel among the largest congress centres in the Czech Republic. With its up-to-date technical equipment and smartly designed interiors it can be considered for hosting all kinds of events.

	m <sup>2</sup>				
Maximum capacity of the largest room	1170	1600	850	770	1800

Total meeting rooms:	No. of bedrooms:	Total meeting space:
18	559	2091 m <sup>2</sup>

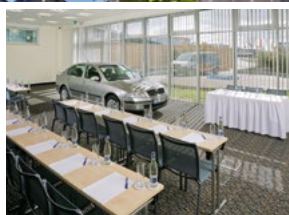
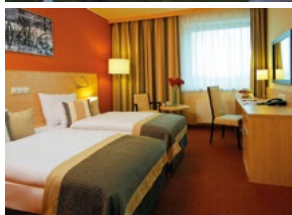
Freyova 33  
190 00 Praha 9  
**Phone:** +420 211 131 154

**E-mail:** sales@cchp.cz  
www.cchp.cz

# Aquapalace Resort Prague



Conference Hotels



Aquapalace Resort Prague is the largest wellness, sport and entertainment complex in Central Europe with wide range of wellness treatments combining work with relaxation. 700 m<sup>2</sup> with 11 variable conference rooms from 24 m<sup>2</sup> to 500 m<sup>2</sup> and entertainment area with the total area of 9150 m<sup>2</sup> in total. You can choose from 231 beautifully appointed rooms and suites. Distinctive amenities range from individual climate control, safe, mini-bar and coffee/tea-making facilities, complimentary Wi-Fi, telephone, flat-screen TV and DVD player to the bathrooms with beauty articles and bathrobe for adults.

	m <sup>2</sup>				
Maximum capacity of the largest room	500	648	440	360	650

Total meeting rooms:	No. of bedrooms:	Total meeting space:
11	231	700 m <sup>2</sup>

Pražská 137  
251 01 Čestlice  
**Phone:** +420 225 108 888

**E-mail:** [info@aquapalacehotel.cz](mailto:info@aquapalacehotel.cz)  
[www.aquapalacehotel.cz](http://www.aquapalacehotel.cz)







# Prague Marriott Hotel



Conference Hotels

The hotel offers 11 conference rooms in total with more than 1,452 square meters of flexible meeting space in Prague, a 24-hour business center and state-of-the-art audio visual capabilities and wireless Internet access in all conference rooms. The ballroom accommodates up to 700 theatre-style or 340 banquet-style guests. Event planners and audio visual experts located on-site. All the conference rooms are renovated and conveniently located on one level.

	m <sup>2</sup>				
Maximum capacity of the largest room	484	650	360	340	550

Total meeting rooms:	No. of bedrooms:	Total meeting space:
11	293	987 m <sup>2</sup>

V Celnici 8

110 00 Praha 1

**Phone:** +420 222 888 860

**E-mail:** [prague.salesoffice@marriott.com](mailto:prague.salesoffice@marriott.com)

[www.marriottprague.com](http://www.marriottprague.com)

# InterContinental Prague



Conference Hotels

InterContinental Prague is directly located on Prague's most famous and luxurious shopping boulevard "Pařížská" connecting the historical Old Town Square with the banks of the Vltava River. It offers 372 rooms, Rooftop restaurant and terrace Zlata Praha, Restaurant Primátor, Duke's Bar&Café, a 24-hour business center, free Wi-fi, a 24-hour in-room dining, extended Health Club&Spa. 14 conference rooms can be flexibly combined and offer the capacity for up to 700 guests. Whatever your needs are, our experienced convention sales team can advise you at every stage of the organization of the event.

	m <sup>2</sup>				
Maximum capacity of the largest room	549	580	402	400	700

Total meeting rooms:	No. of bedrooms:	Total meeting space:
14	372	1700 m <sup>2</sup>

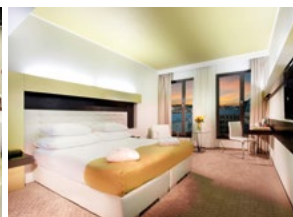
Pařížská 30  
110 00 Praha 1  
**Phone:** +420 296 630 310

**E-mail:** [events@icprague.com](mailto:events@icprague.com)  
[www.intercontinental.com/prague](http://www.intercontinental.com/prague)





# GrandioR Hotel Prague



Conference Hotels

The newly open GrandioR Hotel Prague perfectly situated in the city centre offers 293 contemporary bedrooms. The hotel conference center features 13 flexible meeting rooms with the total area of 810m<sup>2</sup> and up to 515 seats in the main conference room. The glass rooftop of the hotel's 420m<sup>2</sup> large foyer brings daylight and enough space for parallel run meetings. Two restaurants with the capacity of 300 and 120 seats, free Wi-Fi, high tech AV, underground parking and an experienced event team are key to meetings success. The hotel is directly connected with its sister property Designhotel Elephant, sized by 100 bedrooms.

	m <sup>2</sup>				
Maximum capacity of the largest room	427	515	300	350	550

Total meeting rooms:	No. of bedrooms:	Total meeting space:
13	293	810 m <sup>2</sup>

Na Poříčí 42  
110 00 Praha 1  
**Phone:** +420 241 445 445

**E-mail:** [reservation@hotel-grandior.cz](mailto:reservation@hotel-grandior.cz)  
[www.hotel-grandior.cz](http://www.hotel-grandior.cz)



LE  
HOTELS GROUP

- City center location in Prague 1 district
- Walking distance to all historical sights
- Next to the Subway stations  
Namesti Republiky and Florenc
- 14km from Prague International Airport
- Underground parking



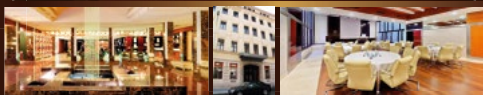
Na Poříčí 42, 110 00 Prague 1, CZ  
Tel.: +420 226 295 111  
reservation@hotel-grandior.cz  
www.hotel-grandior.cz.

- 293 guest rooms total  
254 Superior rooms  
19 Deluxe rooms  
20 Deluxe suites
- Conference center with 13 meeting rooms  
515 participants, Theatre set up  
300 participants, Classroom set up
- Free WiFi
- 2 hotel restaurants (420 seats) + Lobby bar



Na Florenci 29  
110 00 Prague 1, CZ  
Tel.: +420 227 279 111  
reservation@hotel-elephant.cz  
www.hotel-elephant.cz

- 100 guest rooms total  
80 Superior rooms  
20 Deluxe rooms
- Conference center with 13 meeting rooms  
515 participants, Theatre set up  
300 participants, Classroom set up
- Free WiFi
- 2 hotel restaurants (420 seats) + Lobby bar

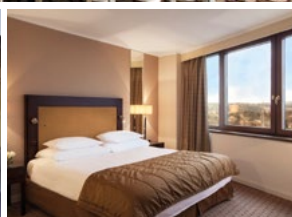
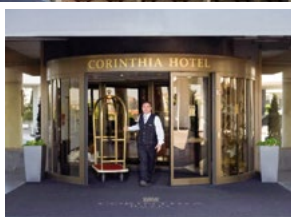


GRAND MAJESTIC PRAGUE

Truhlářská 16, 110 00 Prague 1, CZ  
Tel.: +420 211 159 100  
reservation@hotel-grandmajestic.cz  
www.hotel-grandmajestic.cz

- 196 guest rooms total  
190 Superior design rooms  
6 Design Suites
- 7 meeting rooms  
289 participants, Theatre set up  
140 participants, Classroom set up
- Hotel restaurant (130 seats) + Lobby bar

# Corinthia Hotel Prague



Conference Hotels

Corinthia Hotel Prague stands at the crown of one of Prague's seven hills and offers breathtaking panoramic views across the city. A landmark building overlooking the city adjacent to Prague Congress Centre only 5 minutes from the historic city centre. The Corinthia Conference and Events Centre offers extensive conference facilities for up to 1,500 delegates. The hotel audio visual infrastructure has been thoroughly updated at the beginning of 2015 and now offers the latest technology for meetings and events throughout the different conference spaces.

	m <sup>2</sup>				
Maximum capacity of the largest room	732	500	350	430	700

Total meeting rooms:	No. of bedrooms:	Total meeting space:
22	539	1422 m <sup>2</sup>

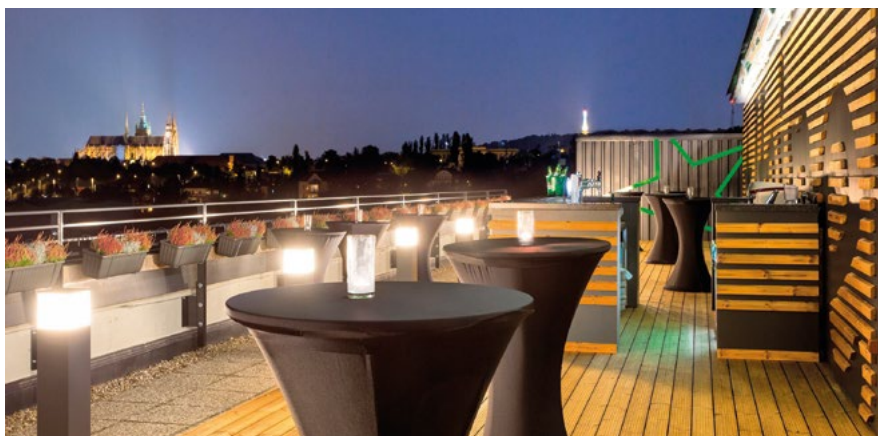
Kongresová 1  
140 69 Praha 4  
**Phone:** +420 261 191 393

**E-mail:** [sales.prague@corinthia.com](mailto:sales.prague@corinthia.com)  
[www.corinthia.com/prague](http://www.corinthia.com/prague)

# Vienna House Diplomat Prague



Conference Hotels



Vienna House Diplomat Prague is a 4\* international hotel ideally located on the edge of the city centre, near the Prague Castle and on a direct route to the airport. It offers 398 refurbished and fully equipped rooms and suites, Lobby bar, Café, a-la Carte restaurant, Wellness centre etc. Among others it offers a large Conference centre with 25 different meeting rooms. The total area of 2,000 sqm offers a capacity for up to 1,260 persons. The Conference centre was refurbished in 2014, when the hotel introduced 3 brand new unique meeting rooms located on the top floor with access to the Roof terrace.

	m <sup>2</sup>				
Maximum capacity of the largest room	379	450	250	240	500

Total meeting rooms:	No. of bedrooms:	Total meeting space:
25	398	2000 m <sup>2</sup>

Evropská 15  
160 41 Praha 6  
**Phone:** +420 296 353 463

**E-mail:** [event.cz@viennahouse.com](mailto:event.cz@viennahouse.com)  
[www.viennahouse.com](http://www.viennahouse.com)

# Hotel Olšanka

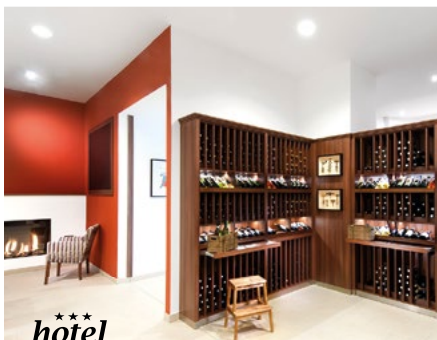


Host an unforgettable event for up to 1,100 attendees in one of our 17 conference halls or lounges and relax afterwards in our sport facilities including our 25-meter swimming pool.

Largest room theatre setup	Total meeting rooms:	No. of bedrooms:	Total meeting space:
460	17	253	3500 m <sup>2</sup>

Táboritská 23/1000  
130 00 Praha 3 - Žižkov  
**Phone:** +420 267 092 202

**E-mail:** [info@hotelolsanka.cz](mailto:info@hotelolsanka.cz)  
[www.hotelolsanka.cz](http://www.hotelolsanka.cz)



Congress & Sports Hotel Olšanka  
Prague





# andel's by Vienna House Prague



andel's by Vienna House Prague has 15 conference rooms with natural daylight and the capacity of up to 360 people, capable of being combined to fit your individual needs.

Largest room theatre setup	Total meeting rooms:	No. of bedrooms:	Total meeting space:
365	15	290	650 m <sup>2</sup>

Stroupežnického 21  
150 00 Praha 5  
**Phone:** +420 296 353 463

**E-mail:** [event.cz@viennahouse.com](mailto:event.cz@viennahouse.com)  
[www.viennahouse.com](http://www.viennahouse.com)



# Hilton Prague Old Town



Conference Hotels

The hotel is located in the heart of the city amidst many of its key attractions. Its proximity to the oldest parts of the city offers guests the option to fully explore the surrounding area. All 303 guest rooms are newly renovated. The hotel is well equipped for guests' meetings and conference needs, with 1,200 m<sup>2</sup> of dedicated meeting space and the flexibility to accommodate groups ranging from 10 to 800 people. Facilities include 14 meeting rooms, all of them feature hi-tech AV equipment and high speed internet access.

	m <sup>2</sup>				
Maximum capacity of the largest room	372	340	200	240	340

Total meeting rooms:	No. of bedrooms:	Total meeting space:
14	303	1200 m <sup>2</sup>

V Celnici 7  
110 00 Praha 1  
**Phone:** +420 224 842 933

**E-mail:** [cb.prague@hilton.com](mailto:cb.prague@hilton.com)  
[www.hiltonpragueoldtown.com](http://www.hiltonpragueoldtown.com)



# Grand Majestic Plaza



Conference Hotels

Hotel Grand Majestic Plaza is a modern design business venue located in the city center, with 196 rooms and 7 conference rooms. The majority of the meeting rooms offer daylight, built-in AV technology, and free Wi-Fi within the whole hotel. Our standard conference business armchairs can be changed for classic chairs to boost the capacity. There is an outside terrace directly connected to the hotel restaurant serving as an extension of the coffee break area. A spacious hotel lobby with a water fountain serves as a social gathering place or as an exhibition area.

	m <sup>2</sup>				
Maximum capacity of the largest room	204	289	140	100	200

Total meeting rooms:	No. of bedrooms:	Total meeting space:
7	196	345 m <sup>2</sup>

Truhlářská 1117/16

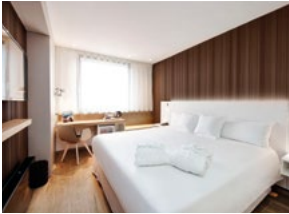
110 00 Praha 1

**Phone:** +420 211 159 880

**E-mail:** [reservation@hotel-grandmajestic.cz](mailto:reservation@hotel-grandmajestic.cz)  
[www.hotel-grandmajestic.cz](http://www.hotel-grandmajestic.cz)



# Barceló Praha



Conference Hotels

The hotel Barceló Praha is located in the heart of Prague's business district, only 5 minutes' walk from the metro station Budějovická (line C), 10 minutes from the historic city center and 25 kilometers from the Václav Havel International Airport Prague. It has a large conference center with the capacity of up to 450 people which is situated on the 1st floor and can be divided into 4 individual rooms by soundproof separating walls. All these rooms feature natural lighting and are equipped with free Wi-Fi, air-conditioning, adjustable lighting and a large range of modern audiovisual equipment.

	m <sup>2</sup>					
Maximum capacity of the largest room	300	280	200	200	200	300

Total meeting rooms:	No. of bedrooms:	Total meeting space:
7	228	482 m <sup>2</sup>

Na Strži 32  
140 00 Praha 4  
**Phone:** +420 296 772 843

**E-mail:** [paha.event@barcelo.com](mailto:paha.event@barcelo.com)  
[www.barcelopraha.com](http://www.barcelopraha.com)

# Hotels



# Hotels

(meeting facilities for up to 250 pax)



Radisson Blu Alcron Hotel	204
angelo by Vienna House Prague	195
Courtyard by Marriott Prague City	182
PARKHOTEL Praha	175
Panorama Hotel Prague	160
Sheraton Prague Charles Square Hotel	160
Hotel Novotel Praha Wenceslas Square	150
Majestic Plaza Prague	140
The Grand Mark Prague	120
Holiday Inn Prague Congress Centre	115
Hotel Century Old Town Prague	90
K+K Hotel Central	70



Theatre



School



Banquet



Reception



# Radisson Blu Alcron Hotel



Located in the heart of Prague, the Art Deco Radisson Blu Alcron Hotel is just steps away from all the historic and cultural attractions awaiting you in the Golden City.

Largest room theatre setup	Total meeting rooms:	No. of bedrooms:	Total meeting space:
204	10	206	588 m <sup>2</sup>

Štěpánská 40

110 00 Praha 1

**Phone:** +420 222 820 000

**E-mail:** [sales.prague@radissonblu.com](mailto:sales.prague@radissonblu.com)

[www.radissonblu.com/hotel-prague](http://www.radissonblu.com/hotel-prague)







# angelo by Vienna House Prague



The conference centre of the angelo by Vienna House Prague for more than 360 guests features 4 modernly appointed rooms that can be divided or combined with movable walls.

Largest room theatre setup	Total meeting rooms:	No. of bedrooms:	Total meeting space:
195	4	168	362 m <sup>2</sup>

Radlická 1g

150 00 Praha 5

**Phone:** +420 296 353 463

**E-mail:** [event.cz@viennahouse.com](mailto:event.cz@viennahouse.com)

[www.viennahouse.com](http://www.viennahouse.com)

# Courtyard by Marriott Prague City



The Courtyard by Marriott Prague City with 161 rooms has been designed to be a place where comfort meets casual efficiency.

Largest room theatre setup	Total meeting rooms:	No. of bedrooms:	Total meeting space:
182	4	161	325 m <sup>2</sup>

Lucemburská 46

130 00 Prague 3

**Phone:** +420 222 888 860

**E-mail:** [prague.salesoffice@marriott.com](mailto:prague.salesoffice@marriott.com)

[www.courtyardpraguecity.com](http://www.courtyardpraguecity.com)



# PARKHOTEL Praha



PARKHOTEL was renovated to its splendid 60's look in March 2015. The unique design combines modern materials with modern technical equipment.

Largest room theatre setup	Total meeting rooms:	No. of bedrooms:	Total meeting space:
175	6	237	400 m <sup>2</sup>

Veletržní 20  
170 00 Praha 7

**Phone:** +420 225 117 809

**E-mail:** [hana.zidkova@parkhotel-praha.cz](mailto:hana.zidkova@parkhotel-praha.cz)  
[www.parkhotel-praha.cz](http://www.parkhotel-praha.cz)



Hotels

# Panorama Hotel Prague



Panorama Hotel Prague offers conference facilities for events of all sizes, from intimate meetings to international conferences for up to 160 people (in theatre style).

Largest room theatre setup	Total meeting rooms:	No. of bedrooms:	Total meeting space:
160	9	440	717 m <sup>2</sup>

Milevská 7  
140 63 Praha 4

**Phone:** +420 261 161 111

**E-mail:** [events@panoramahotelprague.com](mailto:events@panoramahotelprague.com)  
[www.panoramahotelprague.com](http://www.panoramahotelprague.com)

# Sheraton Prague Charles Square Hotel



Sheraton Prague Charles Square Hotel offers 1 conference room, 3 meeting rooms and three pre-function spaces with more than 439 sqm of flexible meeting space in total.

Largest room theatre setup	Total meeting rooms:	No. of bedrooms:	Total meeting space:
160	4	160	374 m <sup>2</sup>

Žitná 561/8

120 00 Praha

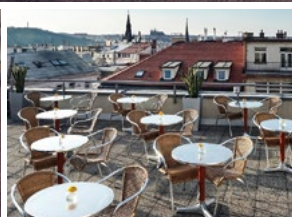
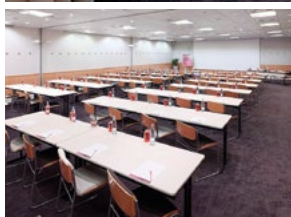
**Phone:** +420 225 999 999

**E-mail:** [reservations@sheratonprague.com](mailto:reservations@sheratonprague.com)

[www.sheratonprague.com](http://www.sheratonprague.com)



# Hotel Novotel Praha Wenceslas Square



Hotels

In the heart of the business area, next to I.P.Pavlova metro station, a stone's throw away from the famous Wenceslas Square and one metro stop from the Prague Convention Centre, Novotel Praha Wenceslas Square offers you all the services you have a right to expect from a 4-star hotel. Our modern and spacious new rooms were designed to give a new meaning to the words "a pleasant stay." All of our 146 rooms are completely soundproof, smoking or non-smoking, equipped with a flat TV, satellite, in-house movie, mini-bar, kettle and hairdryer.

	m <sup>2</sup>				
Maximum capacity of the largest room	171	150	90	72	–

Total meeting rooms:	No. of bedrooms:	Total meeting space:
4	146	248 m <sup>2</sup>

Kateřinská 38  
120 00 Praha 2  
**Phone:** +420 221 104 999

**E-mail:** H3194@accor.com  
www.novotel.com

# Majestic Plaza Prague



Hotel Majestic Plaza is located in the heart of Prague, just a few steps from the famous Wenceslas Square, providing 182 rooms in two interior styles - Art Deco and Biedermeier.

Largest room theatre setup	Total meeting rooms:	No. of bedrooms:	Total meeting space:
140	5	182	356 m <sup>2</sup>

Štěpánská 33

110 00 Praha

**Phone:** +420 221 486 100

**E-mail:** [reservation@hotel-majestic.cz](mailto:reservation@hotel-majestic.cz)

[www.hotel-majestic.cz](http://www.hotel-majestic.cz)





MAJESTIC PLAZA PRAGUE  
— ★ ★ ★ ★ —  
SUPERIOR



*Stylish hotel  
in the heart of beautiful Prague.*



[www.hotel-majestic.cz](http://www.hotel-majestic.cz)

Štěpánská 33; 110 00 Prague 1 ★ Tel.: +420 221 486 100

Fax: +420 221 486 486 ★ E-mail: [reception@hotel-majestic.cz](mailto:reception@hotel-majestic.cz)

# The Grand Mark Prague



The Grand Mark Prague, a new luxury hotel situated in a residential palace dating from the 17th century, will surprise you with the timeless elegance of its interiors.

Largest room theatre setup	Total meeting rooms:	No. of bedrooms:	Total meeting space:
120	11	75	2559 m <sup>2</sup>

Hybernská 12  
110 00 Praha 1

**Phone:** +420 226 226 111

**E-mail:** [sales@grandmark.cz](mailto:sales@grandmark.cz)  
[www.grandmark.cz](http://www.grandmark.cz)



# Holiday Inn Prague Congress Centre



Hotels

The design hotel Holiday Inn Prague Congress Centre located in the peaceful surroundings of historic Vyšehrad can provide full service in organizing events and adapt to meet all your needs. The hotel offers 4 meeting rooms with the capacity of up to 230 people in modern, light and fully air-conditioned venue spaces. Larger events can be placed in the Prague Congress Centre with a capacity of up to 9,300 people. The hotel is connected with the Prague Congress Centre via an indoor corridor. Our space is convenient for your conference, congress, product presentation, social event, company party, and more.

	m <sup>2</sup>				
Maximum capacity of the largest room	140	115	75	65	115

Total meeting rooms:	No. of bedrooms:	Total meeting space:
6	251	446 m <sup>2</sup>

Na Pankráci 15/1684

140 21 Praha 4

**Phone:** +420 296 895 009

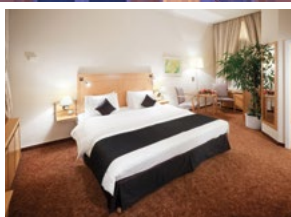
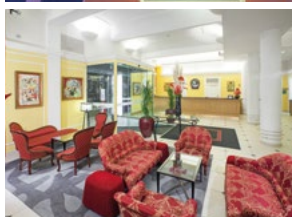
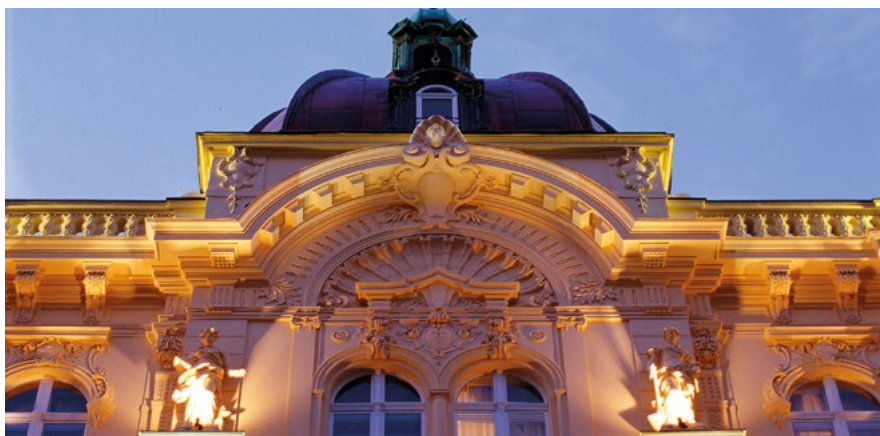
**E-mail:** [reservation@holidayinn.cz](mailto:reservation@holidayinn.cz)

[www.holidayinn.cz](http://www.holidayinn.cz)





# Hotel Century Old Town Prague



Hotels

Hotel Century Old Town is part of the Mgallery collection, a new label of Accor Group. The hotel is located directly in the city center, just a few minutes away from Old Town Square and Wenceslas Square. The hotel offers 174 rooms fully equipped to meet your expectations from 4\* hotel. All 3 meeting rooms are air-conditioned, with natural daylight, and offer the latest audio and video technology, plus free high speed internet. Our dedicated staff will be at your service during your meeting and will help you with all kinds of requests.

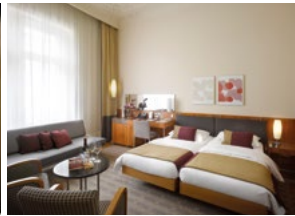
	m <sup>2</sup>				
Maximum capacity of the largest room	120	90	60	64	90

Total meeting rooms:	No. of bedrooms:	Total meeting space:
3	174	120 m <sup>2</sup>

Na Poříčí 7  
110 00 Praha 1  
**Phone:** +420 221 800 800

**E-mail:** H3440@accor.com  
[www.hotelcenturyprague.com](http://www.hotelcenturyprague.com)

# K+K Hotel Central



Hotels

K+K Hotel Central in Prague is centrally located in the heart of the Old Town area, only steps away from the Powder Tower, and is the perfect destination to host your next meeting, conference or event. K+K Hotel Central is a beautiful Art Nouveau property originating from 1901; nowadays, it combines the unique Art Nouveau architecture with ultra-modern architecture and the latest technology. Business event planning is easy at K+K Hotel Central. With our 3 full-service meeting rooms with daylight, including complimentary WiFi, audio-visual support and a professional team, your event is sure to impress.

	m <sup>2</sup>				
Maximum capacity of the largest room	69	70	42	60	70

Total meeting rooms:	No. of bedrooms:	Total meeting space:
3	127	130 m <sup>2</sup>

Hybernská 10  
110 00 Praha 1  
**Phone:** +420 225 022 000

**E-mail:** [hotel.central@kkhotels.cz](mailto:hotel.central@kkhotels.cz)  
[www.kkhotels.com/central](http://www.kkhotels.com/central)



# Catering & Restaurants



# Catering and Restaurants

Francouzská restaurant Art Nouveau

GOLEM Catering

Hard Rock Cafe

Prague Boats

Zátiší Catering



# Francouzská restaurant Art Nouveau



Francouzská restaurant Art Nouveau in the Municipal House is one of the best restaurants in Prague. It is recognized by the prestigious Gault Millau Guide (two toques, i.e. a score of 15 points out of a maximum of 20); the high quality of its food and service are also confirmed by ratings in the TripAdvisor and Grand Restaurant web portals. Francouzská is also one of the most beautiful Art Nouveau restaurants in the world. It is a national treasure not only because of the breathtaking interior, but also due to the kitchen. Executive Chef Jan Horky is the Captain of the National Czech Team of Chefs and Confectioners. Jan gained many experiences from all over the world for example he had a chance to cook in Hong Kong, Singapore, New Delhi and New York and won many local and foreign gastronomical awards. Horky's original approach to gastronomy, along with his sense of harmony guarantee an unusual gourmet experience. All of these contributed to the fact that he had a chance to cook for important people such as U.S. President Barack Obama, or the Czech president Miloš Zeman.

Number of halls:	Total seating capacity	Largest hall capacity
1	375	250

nám. Republiky 5  
110 00 Praha 1  
**Phone:** +420 222 002 770

**E-mail:** [info@francouzskarestaurace.cz](mailto:info@francouzskarestaurace.cz)  
[www.francouzskarestaurace.cz](http://www.francouzskarestaurace.cz)

# GOLEM Catering



Leave your worries with the preparation and implementation all details on professionals with experience in organizing events since 1991.

- 2010–2016 Exclusive caterer of PGA Ladies European Tour, Golf Resort Albatros&Dýšina
- 2014–2016 Exclusive caterer of Czech Beer Festival, Prague Letná
- 2016 gala dinner for 150 guests from Vienna to Prague at Majestic Emperor Train

U Milosrdných 17

110 00 Praha 1

**Phone:** +420 221 990 512

**E-mail:** [natalie.bystricka@golem.cz](mailto:natalie.bystricka@golem.cz)

[www.golem.cz](http://www.golem.cz)

## GOLEM Catering at St. AGNES CONVENT venue



St. Agnes convent – an amazing venue for your events in one of the most important gothic buildings in Prague situated on the right bank of Vltava.



# Hard Rock Cafe

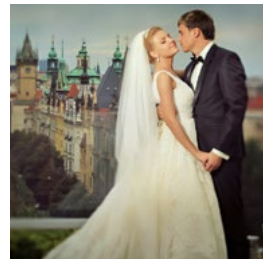


Hard Rock Cafe is set in the historical V.J. Rott Building, a breathtaking UNESCO World Heritage site located 50 meters off the Old Town Square. HRC Prague offers an outside terrace as well as three floors and spaces perfect for any occasion including an intimate Romanesque cellar. We have three vibrant bars and a unique catalogue of outstanding memorabilia from Hard Rock's world famous collection topped by a 5-meter custom-made bohemian crystal chandelier. We have over 6 years of experience to deliver a perfect performance and spaces to cater for up to 800 guests. Whether for a press conference, company meeting, business breakfast, lunch, dinner or gala event we promise a perfect showcase for your delegates and guests alike. We invite you to walk our 'Red Carpet' like rock stars lined with guitars signed by some of the most renowned rock legends of all time! We offer impeccable service like no other company through our "kick ass" service philosophy. Our outstanding culinary team and personalized event planning staff are bursting with innovative ways to add glamour to your Prague event and look forward to your call.

Number of halls:	Total seating capacity	Largest hall capacity
6	444	220

Malé náměstí 3  
110 00 Praha 1  
**Phone:** +420 224 229 529

**E-mail:** [prague\\_sales@hardrock.com](mailto:prague_sales@hardrock.com)  
[www.hardrock.com/prague](http://www.hardrock.com/prague)



# TRANSFORM YOUR EVENT INTO AN AUTHENTIC EXPERIENCE

**CATERING** *by*  
INTERCONTINENTAL PRAGUE

[WWW.ICCATERING.COM](http://WWW.ICCATERING.COM)

Better to be different, better to surprise, and to discover what hosts and guests are really looking for. That is exactly what we at Catering by InterContinental Prague concentrate on. From large gala events to intimate dinners, business meetings, working luncheons and weddings, Catering by InterContinental Prague offers exceptional service, flexibility and a premium quality food and drinks service befitting the location.

# Prague Boats



In the historic centre of Prague just a few steps from Old Town Square anchored the Prague Boats fleet of river boats. Our modern boats, Bohemia Rhapsody and Grand Bohemia provide an attractive environment for conferences, symposia, business meetings and corporate events.

Both boats feature a sliding glass roof which offers an unparalleled view of the Prague panorama. Our boats have comfortable interiors, often divided into a main large salon and a smaller intimate lounge. Of course there is the necessary technical and audio-visual equipment, variable seating arrangements, air conditioning and heating. The boats are also environmentally friendly and operation of the engine is completely silent.

An integral part of the package for conferences and other events is quality catering, which may take the form of coffee breaks, refreshments cocktails, banquets or served menu.

Number of halls:	Total seating capacity	Largest hall capacity
5	450	200

Dvořákovo nábř.

110 00 Praha 1

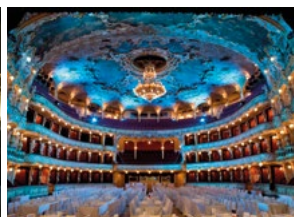
**Phone:** +420 724 202 505

**E-mail:** [info@pragueboats.cz](mailto:info@pragueboats.cz)

[www.prague-boats.cz](http://www.prague-boats.cz)



# Zátiší Catering



“Yes, we can...” was always our philosophy since 1998 when we established Zátiší Catering. The Zátiší Catering Group has become a leading Czech Restaurant & Catering company operating four premier restaurants and a top quality catering business. Zátiší Catering operates across the Czech Republic and Central Europe with headquarters in Prague and an office in Budapest. Passionate about food, we work every day on creating new ideas and producing better events. You can count on our full flexibility, proactive service and communication skills, which add up to the symphony of taste and ingredients we create for you. At Zátiší Catering we understand your needs, and that's why we guarantee you a stress free event by offering uncomplicated solutions to your challenges: Creative ideas, delicious food, service excellence, unique inventory, great value for money and WOW service. Zátiší Catering is General Caterer for the Prague Congress Centre with its exclusive location ZOOM – the Unique Place.

- 2012 - 15 - Exclusive caterer of Skoda Auto in Paris and Geneva car exhibition, 800 guests daily
- 2012 - 13 Moto GP - Exclusive caterer of VIP Villages in all European destinations
- 2009 Official Gala Event of Czech EU Presidency & Head of States Lunch, 1,500 guests

Novotného lávka 5

110 00 Praha 1

**Phone:** +420 277 000 101

**E-mail:** [catering@zatisigroup.cz](mailto:catering@zatisigroup.cz)

[www.zatisicatering.cz](http://www.zatisicatering.cz)

## CONGRESSES



### THE EAPC CONGRESS IN PRAGUE PRAGUE CONGRESS CENTRE

*"Let us thank you warmly for the wonderful cooperation and the excellent support we got from you in hosting our workshop at the EAPC Congress in Prague.*

*Thank you for the wonderful coffee break and lunch boxes and the very friendly and attentive staff!"*

## FUN PARTIES



### ALICE IN WONDERLAND ZOOM UNIQUE PLACE, KCP

*"The Alice in Wonderland party was simply AMAZING. Anicka's creativity and vision was incredible and David, your help and support throughout the entire event went above and beyond. The finished product exceeded my expectations and the food was absolutely delicious. The atmosphere during the party was so uplifting and greatly enhanced by the presence of the Mad Hatter, Alice and the Black Knight actors."*

## GALA DINNERS



### OPERA BALL PRAGUE STATE OPERA

*"We would like to thank you for this year's cooperation and support. Since Saturday, we have only been hearing compliments about the catering and services provided by the Zátiší Catering team – very helpful staff, perfect service, adequate care and smiles on their faces till the very end."*

Project Coordination, HOSPIZ ÖSTERREICH

Operations Manager, IQPC

Opera Ball realisation team



# European Class Catering



# Meeting Organisers





# Meeting Organisers

AIM Group International

AGL travel – Agrolex

BFF Group

C-IN

Columbus Welcome Management

Event Arena

GUARANT International

Liberty Incentives & Congresses

Maxin PRAGUE

Ovation Czech Republic

Senator Meetings & Incentives



# AIM Group International



AIM Group organises over three thousand events and meetings every year. Our team of nearly four hundred people, from over 25 countries and speaking as many languages, works out of 13 offices around the world to put an extraordinary depth and width of experience at your service.

Despite our size, AIM Group still has a “small company” approach to client partnership. From the outset, we set out to understand the needs of each new client and learn their business and procedures.

AIM Group is committed to helping its clients reach their goals, to personalising their event experiences, to providing an innovative environment, and to making a difference. Our strong sense of identification with client projects means that we are constantly striving to provide solutions, even for issues they aren't yet aware of.

At AIM Prague, we pride ourselves on our local knowledge, creativity and experience needed to ensure your event runs smoothly from start to finish.

- 12th Global Forum on Tourism Statistic, Prague, 2014
- 52nd Congress of the International Association of Young Lawyers (AIJA), Prague, 2014
- The Czech-Saudi Business Forum, Prague, 2014

Panská 890/7

110 00 Praha 1

**Phone:** +420 284 007 340

**E-mail:** [prague@aimgroup.eu](mailto:prague@aimgroup.eu)

[www.aimgroupinternational.com](http://www.aimgroupinternational.com)

MAKE ANY EVENT BECOME  
"THE EVENT". CHOOSE SOMEONE  
THAT MAKES A DIFFERENCE.



AIMing to become your preferred partner and to drive change and growth in your organisation, with you, by offering tailor-made solutions backed by our extensive global and local event management experience. Your satisfaction is the only thing that makes us satisfied.

**AIM Group International: Worldwide know-how. Local experience.**

PRAGUE OFFICE

Panská 890/7  
CZ-110 00 Prague 1  
T +420 284 007 340  
F +420 284 007 350  
prague@aimgroup.eu

VIEW ALL

[aimgroupinternational.com](http://aimgroupinternational.com)



# AGL travel – Agrolex



THE CZECH REPUBLIC – LIKE A GOOD MOVIE: MORE YOU WATCH IT, MORE YOU LIKE IT  
Select us, AGL travel - Agrolex, a licensed Czech tour operating company as your new reliable partner for the Czech Republic and surrounding countries. We provide: M.I.C.E., business travel, specialized branch programs (Agriculture, Food and Feed, Architecture, IT, Civil Engineering etc.), organizing of corporate events and supporting exhibitions. For our part, we make your project a pleasurable event of your life as well as the life of your partners, companions and friends. Our work is based on an enthusiasm for planning, creativity, organizing and supporting of events. We collaborate on the basis of equality of rights and friendly contacts. The Czech Republic will enchant you with its beauties, thrilling stories from its history, and inimitable joy of the present life. It resembles a good movie. We are always open to your ideas and requirements.  
DO YOU WANT TO BECOME HEROES OF YOUR MOVIE?

- ESPN 2015 Conference Support – Business Groups / Events mgmt., Prague, 2015
- Hockey World Championship Prague & pre/post event programs, Prague, 2015
- Incentive events for the pharmaceutical clients, Prague/Vienna, 2014

Jungmannova 733/6  
110 00 Prague 1  
**Phone:** +420 222 231 010

**E-mail:** [mice@agltravel.com](mailto:mice@agltravel.com)  
[www.AGLtravel.com](http://www.AGLtravel.com)





BFF Group is a full service PCO, DMC, Event and Trade Show Management company. We are a team of Event Management specialist eager to show our client what our destination has to offer. We know our destination! You can use our eyes, ears, memory and experience to discover Prague and the Czech Republic. We know more than what you find on the Internet – hidden treasures, undiscovered sights, new and trendy clubs and cafés as well as the best hotels and conference venues, restaurants etc. Success of every event, no matter how big or small, lies in success of each part that forms the event. Our experience allows us to bring added value to each of these parts. “BFF” actually stands for “best friends forever” and that is exactly the sort of relationship we have with our clients and suppliers. We at BFF Group are also friends among each other in the office – a team of young enthusiastic professionals led by experienced industry veterans creating this important mix of experience and fresh ideas. We listen to you, understand who the participants are and what they expect.

- 4th CARDIONALE, October 2014, Hilton Prague, 350 participants
- Pharma Road Show, 2013, 9 cities across the Czech Republic, total 1,000 participants
- MyMeEd - International Postgraduate Schools, Accreditation: EACCME EUMS, 9 conferences/1,500 participants in 2014

Politických vězňů 1531/9  
110 00 Praha 1  
**Phone:** +420 733 188 227

**E-mail:** [info@bffgroup.eu](mailto:info@bffgroup.eu)  
[www.bffgroup.eu/cz](http://www.bffgroup.eu/cz)



With over 12 years of experience, C-IN provides the highest level of services specialising in congress and association management, corporate events and special event production. Since 2013, C-IN is the only member of International Association of Professional Congress Organisers (IAPCO) with headquarters situated in the Czech Republic. Our team of 45 people delivers more than 50 events per year and acts as a long term partner for several European associations. Knowledge and experience in anticipating the meeting industry dynamics, stakeholders' expectations and entrepreneurial drive are our key values to our customers.

- Conference of the European Association of International Education (EAIE), Prague, 2014
- The 30th Triennial Congress of the International Confederation of Midwives, Prague, 2014
- 21st EADV Congress, Prague, 2012

5. května 65  
140 21 Praha 4  
**Phone:** +420 261 174 301

**E-mail:** [mkt@c-in.eu](mailto:mkt@c-in.eu)  
[www.c-in.eu/en](http://www.c-in.eu/en)



# Columbus Welcome Management



Columbus Welcome Management Prague is a full Destination Management Company. Why would one stress such an obvious fact? Well, it is because it exactly describes the company's services. We at Columbus manage the destination. We are your eyes, ears, hands and feet in Prague. We know what is new, what is tired, what is coming up, what is a tourist trap. We offer you our memory and experience. And, of course, we arrange airport transfers, welcome packs, accommodation, meetings, AV equipment, pillow gifts, sightseeing tours, incentive programs, team building activities, casual dinners in beer cellars, gala dinners in historic palaces, first class dinners in trendy restaurants, river boat cruises, golf, horse riding, hot air balloon flights, bird spotting and all the other things DMCs usually do...

- Birgit Kraus Invent, Prague, 2012
- MSD Fertility Symposium, Prague, 2013
- Kimball Office, Prague, 2014

Královská 11

110 00 Praha 1

**Phone:** +420 234 647 111

**E-mail:** [office@columbus-prague.com](mailto:office@columbus-prague.com)

[www.columbus-dmc.com](http://www.columbus-dmc.com)

# Event Arena



We are a leading event agency, which has been operating on the Czech market since the year 2000. Since that time we have produced more than 1 800 various events for our clients. We offer complex arrangements and „turnkey“ realization of events on the highest level. Our offer also includes DMC services, event marketing consultancy and activation or sales promo activities. Our team consists of 20 permanent and a wide range of external employees.

Portfolio of provided activities and services:

Ceremonial and VIP events, Special event projects, Internal and business conferences, Product launches, Events for employees and their families, Teambuilding and sports events, Road shows and activation campaigns, Ceremonial opening events, DMC (Destination Management) services, Christmas and New Years' Eve parties, Incentive programs, Trade Fair expositions

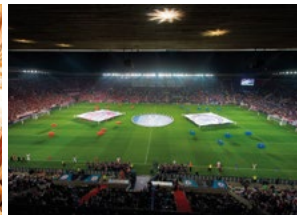
Clients gladly return to us and guests enjoy our events.

- Seznam.cz, Company Birthday Party, 2015, Prague
- Raiffeisenbank, Social VIP Event, 2010, Prague
- Huawei, Launch of Ascend P7, 2014, Prague

Havlíčkovo nám. 2/189  
130 00 Praha 3  
**Phone:** +420 284 019 180

**E-mail:** [info@eventarena.cz](mailto:info@eventarena.cz)  
[www.eventarena.cz](http://www.eventarena.cz)

# GUARANT International



GUARANT International is a leading independent organizer of congress and conference services in Central Europe. Since its establishment in 1991, our company has overseen congresses, conferences, and meetings of all sizes, both locally and internationally, in which our dedicated project managers have lent their professional hands to help clients achieve their goal of organizing a successful event. We boast 46 experienced full time team members who organize up to 80 events annually. Our strategy is to create long-term relationships with associations and corporate clients and since 2012 our offices have been conveniently located in the most prestigious Czech convention venue – the Prague Congress Centre. GUARANT International also offers association management services to 20 Czech and foreign organizations under the brand of the Association House. We also offer Venue Management services mainly in the outstanding locations such as the Kaiserštejnský Palace, and KCC - the City Conference Center - amongst others.

- WONCA 2013 Prague, 20th World Congress, Family Medicine - Care for Generations
- International Microscopy Congress, Prague, 2014
- European Conference on Non-destructive Testing, Prague, 2014

Na Pankráci 17  
140 21 Praha 4  
**Phone:** +420 284 001 444

**E-mail:** [guarant@guarant.cz](mailto:guarant@guarant.cz)  
[www.guarant.cz](http://www.guarant.cz)

# Liberty Incentives & Congresses



A pioneer as a DMC in Central Europe, Liberty Incentives and Congresses - operating MICE programs in the Czech Republic & Slovakia - was founded in 1999 in Prague. We specialize in creative tailor-made programs, offer a large and flexible scope of DMC & PCO services, and focus on Quality of service with dedicated multilingual project managers. Thanks to our reactivity and competitive rates, we wish to contribute in making successful events for our international clients. Starting from personalized DMC services to complex organization of large congresses as PCO, we have become a recognized player in the Czech and Slovak Republics, developing strong bonds with local suppliers (hotels, restaurants, transportation, service providers, etc.), to guarantee flawless professional services at very competitive rates. Liberty Incentives & Congresses is part of the Liberty International Tourism Group, founded in Prague in 1991, operating today in 40 countries worldwide with 50 local offices with "A Personal Touch Worldwide".

- Skoda, 600pax in Forum Karlin, 2015, Superb World Premiere
- Pfizer, 340pax in Hilton Prague, 2015, Meeting
- Deloitte, 400pax (Cumulated), 2015, Training

Spálená 76/14  
110 00 Praha 1

**Phone:** +420 296 337 611

**E-mail:** [czechrepublic@liberty-int.com](mailto:czechrepublic@liberty-int.com)  
[www.liberty-int.com](http://www.liberty-int.com)

# Maxin PRAGUE



Maxin PRAGUE is a full-service DMC/PCO and event production company focused on professional customized services for meetings, incentives, conferences and events since 1999.

- Roche, Prague, 2014
- SEI Fuels, Prague, 2014
- Advent International, Prague, 2014

Spojovací 24

190 00 Praha 9

**Phone:** +420 277 779 913

**E-mail:** [sales@maxin-prague.cz](mailto:sales@maxin-prague.cz)

[www.maxin-prague.cz](http://www.maxin-prague.cz)



YOUR EVENT & DESTINATION MANAGEMENT PARTNER  
IN PRAGUE AND THE CZECH REPUBLIC

**Maxin**PRAGUE  
DETAILS CREATE EXCELLENCE



- site selection
- contract negotiation
- accommodation management
- event technologies & mobile apps
- conference service & congress services
- audio-visual solutions
- restaurant & venue selection
- creative event design
- data content production
- decorations & catering
- music & entertainment
- incentive programs
- teamspirit activities
- meet-and-greet service
- transportation
- temporary staff
- on site management
- CSR measurements

Spojovací 24  
CZ-190 00 Praha 9

+420 224 827 056  
sales@maxin-prague.cz  
www.maxin-prague.cz



# Ovation Czech Republic



Matching destination to customer objectives, Destination connections (who's who), Event creative and design, Venue sourcing and accommodation management are some of the capabilities we deploy to ensure the relevant exposure and excellent delivery on-site.

- Amway Diamond Club, Prague, 2014
- Takeda Christmas party, Prague 2014

Karla Engliš 6

150 00 Praha 5

**Phone:** +420 255 725 460

**E-mail:** [sylvie.neves@ovationdmc.com](mailto:sylvie.neves@ovationdmc.com)

[www.ovationdmc.com](http://www.ovationdmc.com)





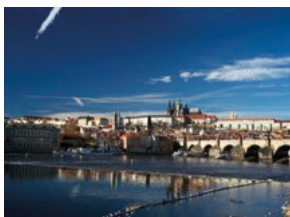


# Senator Meetings & Incentives



Co všechno bych pro Vás neudělal  
I would do anything for you

**Martin Lehký**, Partner / Managing Director



Senator Meetings and Incentives offers services in three key areas: Meetings & Incentives, DMC (Destination Management Company) and PCO services and Business Travel services. The Inbound division is based in Prague and it is a Czech DMC covering all central Europe. Our team consists of 15 multilingual professionals with many years of experience. Each of our event specialists will take care of every event from the beginning to the last invoice. We are flexible, available 24 hours a day. At the same time, our clients can rely on us to always get the best care without any need to compromise. After all, we have a lot to build on having a long-standing experience working on both clients' and service providers' side. Our team's daily motivation is striving to meet our clients' thirst for new venues to explore. We believe that our services will be of interest to you and that we will use any chance to prove that it is possible to find a trustworthy partner in the field of corporate travel. Try us out and you will see the difference.

- FIG Marketing, 2014
- Rogers, 2014
- EVECCS Congress, 2014

Korunní 810/104

101 00 Praha 10

**Phone:** +420 234 726 140

**E-mail:** [katerina.hajkova@senatortravel.eu](mailto:katerina.hajkova@senatortravel.eu)

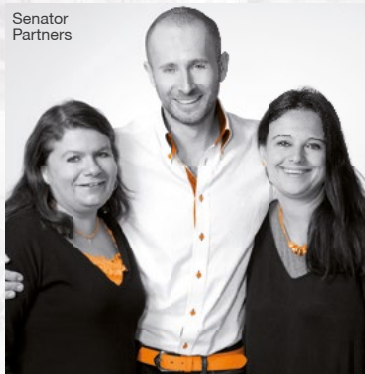
[www.senatortravel.eu](http://www.senatortravel.eu)

# DMC and PCO in Prague

Senator Meetings&Incentives based in Prague is a Destination Management Company and PCO covering all Central Europe providing upscale services for your event, meeting or congress. Please ask us for client references.

- Meetings and Incentives
- Conferences, Congresses, Symposia
- Product Launches
- Company Trainings
- Business and Leisure Travel
- Special Interest Groups and Cultural Events
- Sports Groups
- Tailored programs for Individual Clients

Senator  
Partners



Kateřina  
Hájková

Martin  
Lehký

Andrea  
Hantscherová

In strong  
partnership  
we trust.



# Others



# Others

AV MEDIA

CARSLine

Computer System Group

Hostesky.cz

Mikenopa

Vega Tour

VT Rental



# AV MEDIA



We are a team of top professionals who bring you more than just audiovisual equipment – we bring you the willingness to listen, assistance in defining your needs and goals, creativity and perfect understanding. The portfolio of our services includes sale and lease of presentation technology, audiovisual systems, lighting and other services that are provided at the highest professional level. AV MEDIA group has 8 company branches in Central Europe, servicing the Czech Republic, Poland, Hungary, Slovakia, Austria and other neighbouring countries. AV MEDIA was founded in 1992, and with more than 200 employees is becoming one of the biggest players in the CEE region. With five star quality standards in execution, ISO certified processes, CTS certified technical staff and innovative AV technologies, AV MEDIA Group focuses on providing services that exceed your expectations.

- Retail Summit Conference, Prague, 2015
- Olympic Park Sochi – Letna 2014, Prague, 2014
- Signal Festival, Prague, 2014

Pražská 63  
102 00 Praha 10  
**Phone:** +420 261 260 218

**E-mail:** [paha@avmedia.cz](mailto:paha@avmedia.cz)  
[www.avmedia.cz](http://www.avmedia.cz)

# Computer System Group a.s.



An important part of our company Computer System Group a.s. is the department of AV equipment management that also provides equipment to hire. This department was created in 2007 as part of our services expansion and focuses on organizing conferences and congress services for hotels, corporate clients and associations, including complete technical and personal services. We provide everything from audio, video and lighting equipment to telecommunications and interpreter equipment, interpreters, hostesses and professional photographers. Our strong team has a great experience with dealing with prestigious international hotels as well as hotels based in Prague and the Czech Republic. We have many years of experience with more than 20 top Czech hotels, congress centers and corporate clients all over Europe. We also provide short term rentals of wide range of IT and office equipment. We are also able to create a complete temporary Wi-Fi net including technical supervision.

Others

5. května 65  
140 21 Praha 45  
**Phone:** +420 605 288 358

**E-mail:** [sarka.dobiasova@computersystem.cz](mailto:sarka.dobiasova@computersystem.cz)  
[www.computersystem.cz](http://www.computersystem.cz)



# CARSLINE



CARSLINE provides full personal transportation with a modern fleet, which includes limousines, passenger cars, minivans, minibuses and coaches.

- Service supplier to the Prague Embassy of the United States of America, 2009 - 2014
- Event Samsonite, Prague, 2013
- Event Herbalife Extravaganza, Prague, 2014

Holečkova 13

150 00 Praha 5 - Smíchov

**Phone:** +420 737 028 002

**E-mail:** [info@carsline.cz](mailto:info@carsline.cz)

[www.carsline.cz](http://www.carsline.cz)

# hostesky.cz



Since 2001, we provide top class services of hostesses and hosts for your events in award winning quality. Our database contains over 3 000 staff.

- EUROPEAN HABITAT (120 hostesses), Prague - March 2016
- Hilton EMEA GM's & Sales Conference (150 hostesses), Prague - February 2016
- ŠKODA Auto Driving Experience, Florence - May 2015

Zlatnická 1582/10

110 00 Praha 1

**Phone:** +420 603 551 716

**E-mail:** [info@hostesky.cz](mailto:info@hostesky.cz)

[www.hostesky.cz](http://www.hostesky.cz)

# Mikenopa



A unique combination of AV and IT technologies and comprehensive services related to: projections, sound system, lighting, interpretation, robotic camera systems, cameras and video streaming, videoconferences, office equipment, Wi-Fi and wired LAN network up to 4,000 concurrent users. Mikenopa was established in 2001. High technology and an experienced team of our technicians will ensure the success of your event. For each event we provide a dedicated senior technician - Conference Butler®, who is responsible for the quality of technical support and handling of the event. Mikenopa - technology with a human touch. Mikenopa - the partner for your events.

- VMware Forum, Prague, 2014
- GBTA, Prague, 2013
- CISCO Expo, Prague, 2012

Rohanské nábřeží 671/15  
186 00 Praha 8  
**Phone:** +420 234 616 130

**E-mail:** [sales@mikenopa.com](mailto:sales@mikenopa.com)  
[www.mikenopa.com](http://www.mikenopa.com)

## Vega Tour



Vega Tour is a leading European coach company with more than 150 coaches, minibuses and limousines to hire. We provide services for large conferences, MICE events, tours.

- WOMEN'S WORLD FLOORBALL CHAMPIONSHIPS 2013, 2014
- Advent Markets, Dresden, Norimberk, Vienna, 2014
- Ensure incoming services in Paris, 2014

Vídeňská 142

148 00 Praha 4

**Phone:** +420 242 447 200

**E-mail:** [sales@vegatour.cz](mailto:sales@vegatour.cz)

[www.vegatour.cz](http://www.vegatour.cz)

## VT Rental s.r.o.



We rent LED screens, projections, sound, lighting and interpreting equipments for your conferences, conventions and events.

- Emirates, Budapest – Gala dinner, 2015
- Řízení letového provozu, Praha – Christmas party, 2015
- Daikin, Plzeň – Conference, 2015

Podedvorská 1416

198 00 Praha 9

**Phone:** +420 602 309 141

**E-mail:** [info@vtproject.cz](mailto:info@vtproject.cz)

[www.vtproject.cz](http://www.vtproject.cz)



# Unique Venues





## Břevnov Monastery

The Monastery has served as a meeting place for over 1000 years. Intercatering aspires to continue the tradition of hospitality.

[www.intercatering-brevnov.cz](http://www.intercatering-brevnov.cz)



## Brewery and Restaurant U Fleků

The first written mention of U Fleků dates back to 1499. It's the only brewery in Central Europe which has been brewing continuously for over 500 years.

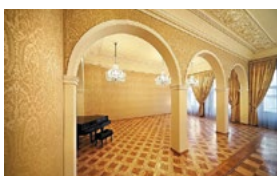
<http://ufleku.cz>



## Exhibition Grounds Prague - Holešovice

The Grounds are an attractive and sought-after exhibition space with a long tradition. It covers an area of 36 hectares and is dominated by the Art Nouveau Industrial Palace.

[www.vystavistepraha.eu](http://www.vystavistepraha.eu)



## Kaiserstein Palace

This baroque building is situated in the middle of the busy Lesser Town Square. The palace has a variety of halls and rooms to meet the needs of all kinds of social events.

[www.kaiserstejnsky-palac.cz](http://www.kaiserstejnsky-palac.cz)



## Kampa Park Group

Three restaurants located in the most beautiful sections of old Prague offering a variety of fine dining experiences.

[www.kampagroup.com](http://www.kampagroup.com)



## Malostranský Palace

A late baroque assembly hall, which has been recently renovated, is fully adapted to accommodate various types of organized events.

[www.malostranskypalac.cz](http://www.malostranskypalac.cz)



## Municipal House

The Municipal House, a national heritage building, is one of the most important Art Nouveau buildings in Prague.

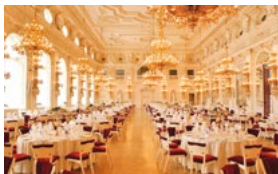
[www.obecnidum.cz](http://www.obecnidum.cz)



## O2 arena

This multifunctional arena located in north-eastern Prague is one of the leading facilities in Europe, with a seating capacity of up to 18,000.

[www.o2arena.cz](http://www.o2arena.cz)



## Prague Castle

Prague Castle, an ancient symbol of the Czech lands, is the most significant Czech monument and one of the most important cultural institutions in the Czech Republic.

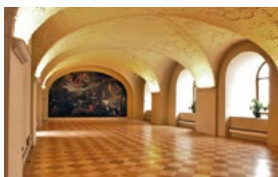
[www.hrad.cz](http://www.hrad.cz)



## Rudolfinum

The Rudolfinum, located on the right bank of the Vltava overlooking the Lesser Quarter and Prague Castle, belongs to the Old Town, one of the oldest parts of Prague.

[www.ceskafilharmonie.cz/rudolfinum-p38.html](http://www.ceskafilharmonie.cz/rudolfinum-p38.html)



## Strahov Monastery

The Royal Canonry of Premonstratensians at Strahov has been a working monastery practically ever since it was founded in 1143.

[www.strahovskyclaster.cz](http://www.strahovskyclaster.cz)



## Strahov Monastic Brewery

The Strahov Monastic Brewery is located close to Prague Castle in the building of the Strahov Monastery, which was founded by King Vladislav II in 1142.

[www.klasterni-pivovar.cz](http://www.klasterni-pivovar.cz)



## The Cloister of St. Agnes of Bohemia

Established by Přemyslid Princess Agnes, sister of King Václav I, it is the first Gothic building structure in Prague.

[www.ngprague.cz](http://www.ngprague.cz)



## Tower Park Praha

The tallest building in the metropolis offers a unique 360° panorama with a restaurant, bistro, bar and six-suite hotel.

[www.towerpark.cz](http://www.towerpark.cz)



# Social Program



# Incentive Activities

## Art Nouveau Tour

The end of the 19th and beginning of the 20th century brought new architectural styles. You can compare various examples of Prague Art Nouveau with other styles of the period, see unique Art Nouveau gems, such as the Municipal House and its decoration, the Alfons Mucha Museum, the Industrial Palace, the Grand Hotel Europa, and others..

## Mozart Tour

A unique opportunity to visit locations where Mozart stayed in Prague. It also reveals why Prague's citizens welcomed Mozart so warmly, and why his music continues to win Czech hearts today.

## Franz Kafka Tour

The Franz Kafka Tour will take you to places associated with the famous writer, places that influenced his writing and are typical of the inspiring atmosphere of the city at the beginning of 20th century.

## Beer Tour

The Prague Brewery Tour visits the best brewpubs in the city, including the most historic, to taste the beer brewed on the premises, and to soak up the long tradition of brewing in the Golden City.

## Old-Timer Car Rally

Sightseeing tours in the footsteps of Bohemian kings using different vehicles - Trabants, old-fashioned Skoda cars, vintage cars and others.

## Social Events on a Boat

The Vltava River is a perfect place from which to admire the beauty of Prague. You can choose from many different cruises, combined with lunch or dinner, and even music. Prague Venice boat trips will show you Prague's main sights from the perspective of a fisherman on the Vltava River 100 years ago.

## Historical Tram Ride

Ride back into the history of Prague in 70 to 100 year old trams on a unique tour. The guide is the conductor in period uniform. The tram follows the route of your choice.

## Treasure Hunt

This competitive event takes your teams around the city visiting famous landmarks. You will be amazed by the fantastic medieval buildings that appear around every bend of the ancient cobbled streets, and be won over by the friendliness of the people.

## Glass Decoration

Visit a famous glass gallery in Prague where you can admire beautiful works of art, and create your own piece of art using your artistic flair to paint a piece of glass.

## Cinematic Prague

Experience the Prague of James Bond or Mission Impossible, and go on a mission full of danger. Action games are inspired by the stories of these famous movies, both filmed in Prague.

## Action on Ice

When it comes to ice hockey, Czechs are known around the world for being masters of the rink. Challenge your team by playing a game of ice hockey and receive some coaching from a Czech ice hockey professional.

## Cookery Course

Would you like to learn to cook traditional Czech dishes or exotic specialties? Let the real professionals show you how to prepare savoury soups, fantastic main courses, and delicious desserts.

## Prague Utility Tunnels

Experience the technical underground of the City of Prague. Dozens of metres below the surface of Prague's historic centre, you will see the underground tunnels which contain the engineering networks that ensure the day-to-day functioning of a modern city.

## Dragon Boats

A non-traditional team experience - synchronous paddling in dragon boats, originally a 2000 year old Chinese tradition, that has been transferred to the heart of Europe.

## Folklore Garden

Attend a performance of professional musicians and dancers in traditional costumes and enjoy the atmosphere of the Czech countryside and rustic Czech entertainment. The folklore evening can also include a dinner composed of traditional Czech dishes.

## Balloon Tour

The sightseeing balloon flight offers an unforgettable view of the countryside from the balloon basket. Experience the beauty of flying without the sound of engines, in the open air.

## Karting

A teambuilding activity for those who enjoy speed and adventure. You can spend the whole afternoon in Europe's second largest indoor racetrack and experience speed racing.

## Privately Organized Classical Concerts

When visiting Prague, enjoying classical music is a must. There are a number of options you can choose from – opera houses, theatres, concert halls, churches, monasteries, historical palaces, or palace gardens – all these venues can host concerts of classical music upon request.



# Day out of Prague

## Karlštejn

One of the most picturesque castles in the Czech Republic, Karlštejn Castle offers a great historical culture trip with a guide included. Located just 35km southwest of Prague, Karlštejn Castle is one of the most famous castles in the Czech Republic and thus the Karlštejn Castle Tour is one of the most popular castle tours in the country.

## Terezín Memorial

Terezin was converted into a prison at the beginning of the 19th century. During the period of Nazi occupation of World War II, in 1940, while under the control of the Gestapo, the town of Terezin was turned into a Jewish ghetto. Cynically, for Nazi propaganda purposes, the Gestapo famously (and successfully) presented the Terezin ghetto to an inspection delegation of the International Red Cross Organisation as an ideal, model Jewish settlement.

## Kutná Hora

Kutná Hora was founded in the 13th century and due to its prosperity resulting from silver mining, it became the most important and richest town in Bohemia after Prague, with several Bohemian kings making it their temporary residence throughout the years. Since 1995 Kutná Hora has been registered on the UNESCO protected World Cultural



and Natural Heritage list. The guided Kutná Hora tour will take in the most important buildings and places, including the gothic St. Barbara's Cathedral and Italian Court - originally a Royal Mint and source of the "Prague Penny".

## Český Krumlov

Český Krumlov is situated on a meandering "s" bend of the Vltava River in South Bohemia. The town has been a protected UNESCO World Cultural and Natural Heritage site since 1992. Founded in the 13th century, the historic centre is a maze of small, narrow cobblestone lanes with hundreds of colourful Gothic, Renaissance, and Baroque houses which enable present day Český Krumlov to retain its former medieval character and fairy-tale charm.



## Karlovy Vary

Nestled amid the picturesque mountains of West Bohemia, Karlovy Vary was founded in 1358 by King Charles IV; from then on, Karlovy Vary became famous throughout the world for its 12 medicinal mineral springs. Over the years, luminaries such as the Russian Czar Peter the Great and the famous poet Johann Wolfgang von Goethe praised the curative effects of the town's mineral springs. More recently, during the modern era Karlovy Vary became known for the annual Karlovy Vary International Film Festival attended by many internationally famous directors and film stars.



## Czech Republic – an ideal congress and incentive destination

**World-class service at affordable prices, safety and high standards. The Czech Republic has all that to offer and more in the field of congress and incentive tourism. Modern congress centres and luxury hotels in charming historical settings throughout the Czech Republic offer high quality facilities to an increasing number of MICE event organisers from around the world. Whether you choose Prague or any of the smaller Czech towns, you will receive the best comfort everywhere in the setting of historical monuments, near spa or wellness facilities of golf courses.**

For years the Czech Republic has ranked among the thirty most suitable countries in the world for congress tourism, Prague even belongs among the top fifteen most popular cities. The CzechTourism agency has long strived to ensure that the highest number of congresses and conferences possible are held in the Czech Republic and that the services offered are of the best possible quality. Therefore, Czech Convention Bureau was established in 2010 under the Czech Tourist Authority - CzechTourism. Its aim is to promote the Czech Republic as an ideal tourist destination on the domestic and international markets. As a separate department, Czech Convention Bureau focuses on the promotion of MICE events.

### Czech Convention Bureau

The organisation of any MICE event, whether a congress, conference, company meeting or incentive trip, requires thorough planning and professional organisation. Preparations and much more is exactly what the Czech Convention Bureau helps clients with, thus acting as an international platform for congress and incentive tourism in the Czech Republic. Its main goal is to promote the Czech Republic in a unified way as an ideal



Congress and incentive destination, and provide effective coordination of all marketing and business activities to foreign partners and potential clients. The Czech Convention Bureau also covers various regional congress offices, unifies the presentation of all Czech regions and thus helps ensure that the Czech Republic's potential for congress tourism is fully realized. Currently, 12 regional agencies – convention bureaux are involved in the project.

In addition to participating in fairs, organising press and familiarisation trips, workshops and road shows, the Czech Convention Bureau also focuses its efforts on providing free information, advisory and consultancy services for those who are interested in the organisation of a MICE event in the Czech Republic. It is the essential point of contact for all who plan to hold any sort of MICE event in the Czech Republic. It provides conference organisers a wide range of complimentary services and tools tailored to meet their needs and the needs of their clients. The Czech Convention Bureau can help those interested with planning events, organising tours of potential venues, preparing the social part of the programme and even selecting suitable partners.

The Czech Convention Bureau also continues to develop the “Candidacy campaign” project within which the CzechTourism agency became one of the main partners for local PCO (Professional Congress Organiser) and DMC (Destination Management Company) companies, actively helping them gain the largest number of congresses in the Czech Republic. Among others, the Czech Convention Bureau has managed to successfully get the Czech Republic its longest congress in its history: The IUGG Congress (International Union of Geodesy and Geophysics) will be held in Prague in June and July 2015 for a period of 11 days.

## Contact

Czech Convention Bureau - CzechTourism  
Vínohradská 46, 120 41 Prague 2, Czech Republic  
Phone: +420 221 580 111  
Email: [czechconvention@czechtourism.com](mailto:czechconvention@czechtourism.com)

[www.czechconvention.com](http://www.czechconvention.com)






# Partners





Published by  for Prague Convention Bureau

Edition 2016

The Publisher bears no responsibility for the content of advertisements and company presentations.

Photo:

[www.thinkstockphotos.com](http://www.thinkstockphotos.com)

Archive Prague Convention Bureau

Prague City Tourism

[www.samphotostock.cz](http://www.samphotostock.cz)

[www.stockfresh.com](http://www.stockfresh.com)

Czech Convention Bureau - CzechTourism

Czech Railways

Prague Convention Bureau

Rytířská 26, 110 00 Prague 1

Czech Republic

Tel: +420 224 235 159

E-mail: [info@pragueconvention.cz](mailto:info@pragueconvention.cz)

[www.pragueconvention.cz](http://www.pragueconvention.cz)





Prague Convention Bureau  
Rytířská 26  
110 00 Prague 1  
Czech Republic  
Phone: +420 224 235 159  
E-mail: [info@pragueconvention.cz](mailto:info@pragueconvention.cz)  
[www.pragueconvention.cz](http://www.pragueconvention.cz)